

For Research Use Only

CoraLite® Plus 488 Anti-Human CEACAM5/8 (CD66b/e) Rabbit Recombinant Antibody

Catalog Number: CL488-98012



Basic Information

Catalog Number: CL488-98012	GenBank Accession Number: BC026263	Purification Method: Protein A purification
Size: 100tests, 5 ul/test	GeneID (NCBI): 1088	CloneNo.: 230353B7
Source: Rabbit	UNIPROT ID: P31997	Excitation/Emission maxima wavelengths: 493 nm / 522 nm
Isotype: IgG	Full Name: carcinoembryonic antigen-related cell adhesion molecule 8	
	Calculated MW: 38 kDa	

Applications

Tested Applications:
FC

Species Specificity:
human

Background Information

Carcinoembryonic antigen-related cell adhesion molecules (CEACAMs) belong to the immunoglobulin superfamily of cell adhesion molecules. CEACAMs play major roles in cell-cell and cell-ECM adhesion and have been implicated in controlling cell proliferation, angiogenesis, and tissue remodeling (PMID: 23021083). Carcinoembryonic antigen (CEA), also known as CEACAM5 or CD66e mainly serves as a cell adhesion molecule mediating intercellular contact by both homophilic and heterophilic binding (PMID: 21731662). CEACAM8, also known as CD66b, CGM6 or NCA-95, is a glycosylphosphatidylinositol (GPI)-linked glycoprotein expressed on granulocytes and is involved in regulating adhesion and activation of eosinophils (PMID: 8104998; 18056392; 18056392). This antibody is raised against 35-319 aa of human CEACAM8/CD66b and can cross-react with CEACAM5/CD66e.

Storage

Storage:
Store at 2-8°C. Avoid exposure to light. Stable for one year after shipment.

Storage Buffer:
PBS with 0.09% sodium azide and 0.5% BSA.

For technical support and original validation data for this product please contact:

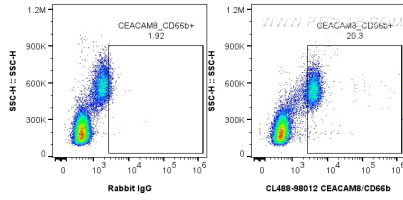
T: 4006900926

E: Proteintech-CN@ptglab.com

W: ptgcn.com

This product is exclusively available under Proteintech Group brand and is not available to purchase from any other manufacturer.

Selected Validation Data



1x10⁶ human PBMCs were surface stained with 5 ul CoraLite® Plus 488 Anti-Human CEACAM5/8 (CD66b/e) (CL488-98012, Clone: 230353B7) or Isotype Control. Cells were not fixed.