

For Research Use Only

CoraLite® Plus 488 Anti-Human CD28 Rabbit Recombinant Antibody



Catalog Number: CL488-98032

Basic Information

Catalog Number: CL488-98032	GenBank Accession Number: BC093698	Purification Method: Protein A purification
Size: 100tests, 5 µl/test	GeneID (NCBI): 940	CloneNo.: 240354D2
Source: Rabbit	ENSEMBL Gene ID: ENSG00000178562	Excitation/Emission maxima wavelengths: 493 nm / 522 nm
Isotype: IgG	UNIPROT ID: P10747	
	Full Name: CD28 molecule	
	Calculated MW: 220 aa, 25 kDa	

Applications

Tested Applications:
FC

Species Specificity:
human

Background Information

CD28 (T-cell-specific surface glycoprotein CD28), also known as T44 and Tp44, is a 44 kD disulfide-linked homodimeric type I glycoprotein (PMID: 2162180). It is a member of the immunoglobulin superfamily and is expressed on most T lineage cells, NK cell subsets, and plasma cells (PMID: 2162180, 8386518). CD28 may affect in vivo immune responses by functioning both as a cell adhesion molecule linking B and T lymphocytes and as the surface component of a novel signal transduction pathway (PMID: 2162180, 3021470). CD28 binds both CD80 and CD86 with a highly conserved motif MYPPY in the CDR3-like loop (PMID: 15696168, 7964482). CD28 is considered a major co-stimulatory molecule, inducing T lymphocyte activation and IL-2 synthesis, and preventing cell death (PMID: 1348520).

Storage

Storage:
Store at 2-8°C. Avoid exposure to light.

Storage Buffer:
PBS with 0.09% sodium azide and 0.5% BSA.

For technical support and original validation data for this product please contact:

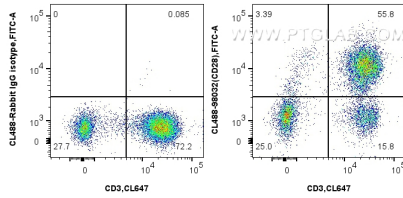
T: 4006900926

E: Proteintech-CN@ptglab.com

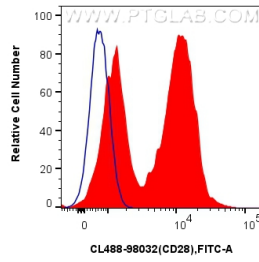
W: ptgcn.com

This product is exclusively available under Proteintech Group brand and is not available to purchase from any other manufacturer.

Selected Validation Data



1x10⁶ human PBMCs were surface stained with CoraLite® Plus 647 Anti-Human CD3 and 5 ul CoraLite® Plus 488 Anti-Human CD28 Rabbit Recombinant Antibody (CL488-98032, Clone:240354D2), or Isotype Control. Cells were not fixed. Lymphocytes were gated.



1x10⁶ human PBMCs were surface stained with 5 ul CoraLite® Plus 488 Anti-Human CD28 Rabbit Recombinant Antibody (CL488-98032, Clone:240354D2) (red), or Isotype Control (blue). Cells were not fixed. Lymphocytes were gated.