

For Research Use Only

CoraLite® Plus 488 Anti-Human CD56 Rabbit Recombinant Antibody

Catalog Number:CL488-98033



Basic Information

Catalog Number:

CL488-98033

Size:

100tests, 5 ul/test

Source:

Rabbit

Isotype:

IgG

GenBank Accession Number:

BC047244

GeneID (NCBI):

4684

ENSEMBL Gene ID:

ENSG00000149294

UNIPROT ID:

P13591

Full Name:

neural cell adhesion molecule 1

Calculated MW:

95 kDa

Purification Method:

Protein A purification

CloneNo.:

240078A7

Excitation/Emission maxima wavelengths:

493 nm / 522 nm

Applications

Tested Applications:

FC

Species Specificity:

human

Background Information

Neural cell adhesion molecule 1 (NCAM1, also known as CD56) is a cell adhesion glycoprotein of the immunoglobulin (Ig) superfamily. It is a multifunction protein involved in synaptic plasticity, neurodevelopment, and neurogenesis. NCAM1 is expressed on human neurons, glial cells, skeletal muscle cells, NK cells and a subset of T cells, and the expression is observed in a wide variety of human tumors, including myeloma, myeloid leukemia, neuroendocrine tumors, Wilms' tumor, neuroblastoma, and NK/T cell lymphomas.

Storage

Storage:

Store at 2-8°C. Avoid exposure to light. Stable for one year after shipment.

Storage Buffer:

PBS with 0.09% sodium azide and 0.5% BSA.

For technical support and original validation data for this product please contact:

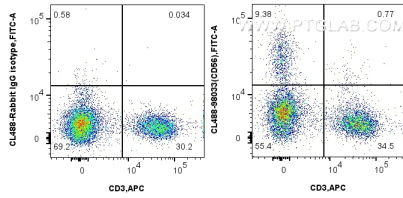
T: 4006900926

E: Proteintech-CN@ptglab.com

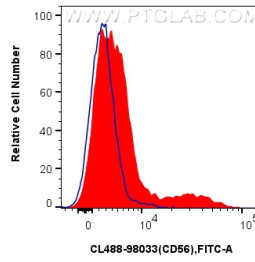
W: ptgcn.com

This product is exclusively available under Proteintech Group brand and is not available to purchase from any other manufacturer.

Selected Validation Data



1x10⁶ human peripheral blood leukocytes were surface stained with APC Anti-Human CD3 and 5 ul CoraLite® Plus 488 Anti-Human CD56 Rabbit Recombinant Antibody (CL488-98033, Clone: 240078A7) or Isotype Control. Cells were incubated with FC Receptor Block prior to staining. Cells were not fixed.



1x10⁶ human peripheral blood leukocytes were surface stained with 5 ul CoraLite® Plus 488 Anti-Human CD56 Rabbit Recombinant Antibody (CL488-98033, Clone: 240078A7) (red) or Isotype Control (blue). Cells were incubated with FC Receptor Block prior to staining. Cells were not fixed.