

For Research Use Only



CoraLite® Plus 488 Anti-Human CD141/Thrombomodulin Rabbit Recombinant Antibody

Catalog Number: **CL488-98037**

Basic Information

Catalog Number: CL488-98037	GenBank Accession Number: NM_000361.3	Purification Method: Protein A purification
Size: 100tests, 5 ul/test	GeneID (NCBI): 7056	CloneNo.: 240365E11
Source: Rabbit	UNIPROT ID: P07204	Excitation/Emission maxima wavelengths: 493 nm / 522 nm
Isotype: IgG	Full Name: thrombomodulin	
	Calculated MW: 60 kDa	

Applications

Tested Applications:
FC

Species Specificity:
human

Background Information

Thrombomodulin, also known as CD141, is an endothelial cell surface glycoprotein that forms a 1:1 complex with the coagulation factor thrombin and plays an important role as a natural anticoagulant. Thrombomodulin serves to convert thrombin from a procoagulant protein into the activator for protein C. Once converted to activated protein C (APC), this protein serves as a major anticoagulant in blood (PMID: 2827310). Thrombomodulin is also located in other cells (keratinocytes, osteoblasts, macrophages,...) where it might be involved in cell differentiation or in inflammation (PMID: 9814688). In humans, thrombomodulin is encoded by the THBD gene. Mutations in this gene are a cause of thromboembolic disease, also known as inherited thrombophilia. Thrombomodulin is glycosylated and has an apparent molecular weight of 75 to 110 kDa (PMID: 1650405; 2827310).

Storage

Storage:
Store at 2-8°C. Avoid exposure to light.

Storage Buffer:
PBS with 0.09% sodium azide and 0.5% BSA.

For technical support and original validation data for this product please contact:

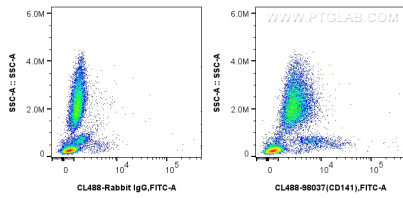
T: 4006900926

E: Proteintech-CN@ptglab.com

W: ptgcn.com

This product is exclusively available under Proteintech Group brand and is not available to purchase from any other manufacturer.

Selected Validation Data



1x10⁶ human peripheral blood leukocytes were surface stained with 5 ul CoraLite® Plus 488 Anti-Human CD141/Thrombomodulin Rabbit Recombinant Antibody (CL488-98037, Clone:240365E11), or Isotype Control. Cells were incubated with FC Receptor Block prior to staining. Cells were not fixed.