

For Research Use Only

CoraLite® Plus 488 Anti-Mouse ICAM-1/CD54 Rabbit Recombinant Antibody



Catalog Number: **CL488-98049**

Basic Information

Catalog Number: CL488-98049	GenBank Accession Number: NM_010493	Purification Method: Protein A purification
Size: 100ug, 500 µg/ml	GeneID (NCBI): 15894	CloneNo.: 240249D10
Source: Rabbit	UNIPROT ID: P13597	Excitation/Emission maxima wavelengths: 493 nm / 522 nm
Isotype: IgG	Full Name: intercellular adhesion molecule 1	
	Calculated MW: 59 kDa	

Applications

Tested Applications:
FC
Species Specificity:
mouse

Background Information

ICAM-1 (CD54) is a 90-kDa transmembrane glycoprotein of the immunoglobulin superfamily and is critical for the firm attachment and transmigration of leukocytes out of blood vessels and into tissues (PMID: 19307690). ICAM-1 is expressed by several cell types, typically on endothelial cells and cells of the immune system, and its expression can be up-regulated by various stimuli, including TNF- α , INF- γ , IL-1 and thrombin (PMID: 3086451; 9694714; 15979056). It is a ligand for LFA-1 and Mac-1, serves as a receptor for rhinovirus, and is one of several receptors used by Plasmodium falciparum (PMID: 2566624; 2538244; 2475784).

Storage

Storage:
Store at 2-8°C. Avoid exposure to light.
Storage Buffer:
PBS with 0.09% sodium azide.

For technical support and original validation data for this product please contact:

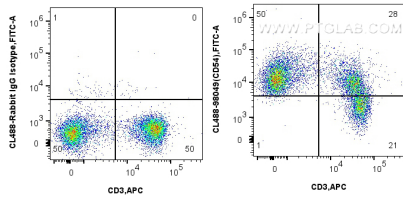
T: 4006900926

E: Proteintech-CN@ptglab.com

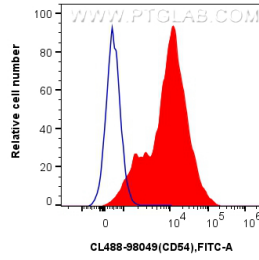
W: ptgcn.com

This product is exclusively available under Proteintech Group brand and is not available to purchase from any other manufacturer.

Selected Validation Data



1x10⁶ mouse splenocytes were surface stained with APC Anti-Mouse CD3 and 0.25 ug CoraLite® Plus 488 Anti-Mouse ICAM-1/CD54 Rabbit Recombinant Antibody (CL488-98049, Clone: 240249D10), or Isotype Control. Cells were not fixed.



1x10⁶ mouse splenocytes were surface stained with 0.25 ug CoraLite® Plus 488 Anti-Mouse ICAM-1/CD54 Rabbit Recombinant Antibody (CL488-98049, Clone: 240249D10) (red), or Isotype Control (blue). Cells were not fixed.