

For Research Use Only

CoraLite®555-conjugated Geminin Polyclonal antibody



Catalog Number: CL555-10802

1 Publications

Basic Information

Catalog Number:

CL555-10802

Size:

1000 µg/ml

Source:

Rabbit

Isotype:

IgG

Immunogen Catalog Number:

AG1076

GenBank Accession Number:

BC005185

GeneID (NCBI):

51053

UNIPROT ID:

O75496

Full Name:

geminin, DNA replication inhibitor

Calculated MW:

24 kDa

Observed MW:

28-29 kDa

Purification Method:

Antigen affinity purification

Recommended Dilutions:

IF 1:50-1:500

Excitation/Emission maxima wavelengths:

557 nm / 570nm

Applications

Tested Applications:

IF/ICC

Cited Applications:

IF

Species Specificity:

human, mouse, rat

Cited Species:

human

Positive Controls:

IF : HepG2 cells,

Background Information

GMNN, also designated geminin, contains 212 amino acids and has a destruction box sequence (RRTLKVIQP). GMNN participates in inhibiting DNA replication by preventing the incorporation of MCM complex into pre-replication complex (pre-RC). It is degraded during the metaphase-anaphase transition of cell cycle's mitotic phase, which permits replication in the succeeding cell cycle. GMNN has a broad sedimentation profile ranging from about 25 kDa to 90 kDa, with a major peak at 30 kDa. Scanning of the signals shows that discrete peaks corresponding to apparent mass of 42.5 kDa and 66 kDa are present. (PMID: 15313623)

Notable Publications

Author	Pubmed ID	Journal	Application
Anastasia Audrey	38625790	Cell Rep	IF

Storage

Storage:

Store at -20°C. Avoid exposure to light.

Storage Buffer:

PBS with 50% Glycerol, 0.05% Proclin300, 0.5% BSA, pH 7.3.

Aliquoting is unnecessary for -20°C storage

For technical support and original validation data for this product please contact:

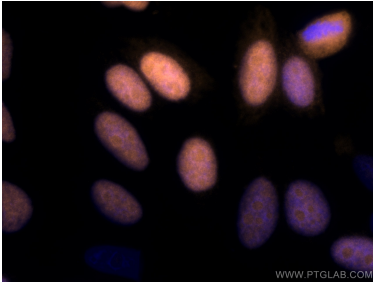
T: 4006900926

E: Proteintech-CN@ptglab.com

W: ptgcn.com

This product is exclusively available under Proteintech Group brand and is not available to purchase from any other manufacturer.

Selected Validation Data



Immunofluorescent analysis of (4% PFA) fixed HepG2 cells using CoraLite@555 Geminin antibody (CL555-10802) at dilution of 1:200.