

For Research Use Only

# CoraLite® Plus 555 Anti-Human PD-L1 (B7-H1) (29E.2A3)



Catalog Number:CL555-65081

## Basic Information

<b>Catalog Number:</b> CL555-65081	<b>GenBank Accession Number:</b> BC069381	<b>Purification Method:</b> Affinity purification
<b>Size:</b> 100tests, 5 ul/test	<b>GeneID (NCBI):</b> 29126	<b>CloneNo.:</b> 29E.2A3
<b>Source:</b> Mouse	<b>UNIPROT ID:</b> Q9NZQ7	<b>Excitation/Emission maxima wavelengths:</b> 554 nm / 570 nm
<b>Isotype:</b> IgG2b, kappa	<b>Full Name:</b> CD274 molecule	

## Applications

**Tested Applications:**  
FC

**Species Specificity:**  
human

## Background Information

Programmed cell death ligand 1 (PD-L1, CD274, or B7-H1), is the first member of B7 family to be discovered. B7 family molecules are type I transmembrane proteins belonging to the immunoglobulin superfamily. In concert with their CD28 family receptors, the B7s are key regulators of the adaptive immune response. PD-L1 is suggested as a negative regulator of T and B cell, and plays important role in mediating tolerance of lymphocytes to self-antigens. It is also involved in the costimulatory signal, essential for T-cell proliferation and production of IL10 and IFNG, in an IL2-dependent and a PD-1-independent manner.

## Storage

**Storage:**  
Store at 2-8°C. Avoid exposure to light.

**Storage Buffer:**  
PBS with 0.09% sodium azide and 0.5% BSA.

For technical support and original validation data for this product please contact:

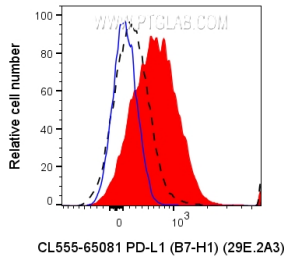
T: 4006900926

E: [Proteintech-CN@ptglab.com](mailto:Proteintech-CN@ptglab.com)

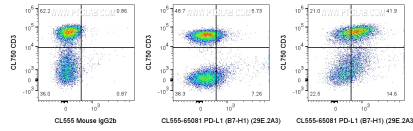
W: [ptgcn.com](http://ptgcn.com)

**This product is exclusively available under Proteintech Group brand and is not available to purchase from any other manufacturer.**

## Selected Validation Data



1x10<sup>6</sup> PHA treated (3 days) human PBMCs were surface stained with 5 ul CoraLite® Plus 555 Anti-Human PD-L1 (B7-H1) (CL555-65081, Clone:29E.2A3) (red) or CoraLite® Plus 555 Mouse IgG2b Isotype Control (blue). 1x10<sup>6</sup> untreated human PBMCs were surface stained with 5 ul CoraLite® Plus 555 Anti-Human PD-L1 (B7-H1) (CL555-65081, Clone:29E.2A3) (black dashed). Cells were treated with FC Receptor Block prior to staining. Cells were not fixed. Lymphocytes were gated.



1x10<sup>6</sup> PHA treated (3 days) human PBMCs were surface stained with CL750 Anti-Human CD3 and 5 ul CoraLite® Plus 555 Anti-Human PD-L1 (B7-H1) (CL555-65081, Clone:29E.2A3) (right) or CoraLite® Plus 555 Mouse IgG2b Isotype Control (left). 1x10<sup>6</sup> untreated human PBMCs were surface stained with 5 ul CoraLite® Plus 555 Anti-Human PD-L1 (B7-H1) (CL555-65081, Clone:29E.2A3) (center). Cells were treated with FC Receptor Block prior to staining. Cells were not fixed. Lymphocytes