

For Research Use Only

CoraLite® Plus 555 Anti-Human CD25 (BC96)



Catalog Number: CL555-65096

Basic Information

Catalog Number: CL555-65096	GenBank Accession Number: BC156627	Purification Method: Affinity purification
Size: 100tests, 5 µl/test	GeneID (NCBI): 3559	CloneNo.: BC96
Source: Mouse	UNIPROT ID: P01589	Excitation/Emission maxima wavelengths: 554 nm / 570 nm
Isotype: IgG1, kappa	Full Name: interleukin 2 receptor, alpha	
	Calculated MW: 272 aa, 31 kDa	

Applications

Tested Applications:
FC

Species Specificity:
Human

Background Information

Proliferation of T lymphocytes is triggered by the interaction of IL-2 with its specific receptor following T lymphocyte activation. The receptor for IL-2 has three forms, generated by different combinations of three different proteins, the alpha chain (IL-2R alpha), the beta chain (IL-2R beta), and the gamma chain (IL-2R gamma) (PMID: 8476561). IL-2R alpha (also known as CD25) is a type I transmembrane protein present on activated T cells, activated B cells, some thymocytes, myeloid precursors, and oligodendrocytes. CD25 is also found on natural CD4⁺Foxp3⁺ Treg cells and a subset of human CD4⁺ memory T cells (PMID: 22585674).

Storage

Storage:
Store at 2-8°C. Avoid exposure to light. Stable for one year after shipment.

Storage Buffer:
PBS with 0.09% sodium azide and 0.5% BSA.

For technical support and original validation data for this product please contact:

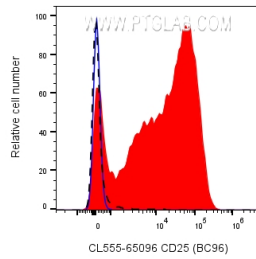
T: 4006900926

E: Proteintech-CN@ptglab.com

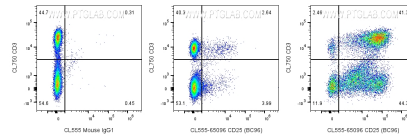
W: ptgcn.com

This product is exclusively available under Proteintech Group brand and is not available to purchase from any other manufacturer.

Selected Validation Data



1x10⁶ PHA treated (3 days) human PBMCs were surface stained with 5 ul CoraLite® Plus 555 Anti-Human CD25 (CL555-65096, Clone:BC96) (red) or CoraLite® Plus 555 Mouse IgG1 Isotype Control (blue). 1x10⁶ untreated human PBMCs were surface stained with 5 ul CoraLite® Plus 555 Anti-Human CD25 (CL555-65096, Clone:BC96) (black dashed). Cells were not fixed. Cells were treated with FC Receptor Block prior to staining. Lymphocytes were gated.



1x10⁶ PHA treated (3 days) human PBMCs were surface stained with CL750 Anti-Human CD3 and 5 ul CoraLite® Plus 555 Anti-Human CD25 (CL555-65096, Clone:BC96) (right) or CoraLite® Plus 555 Mouse IgG1 Isotype Control (left). 1x10⁶ untreated human PBMCs were surface stained with 5 ul CoraLite® Plus 555 Anti-Human CD25 (CL555-65096, Clone:BC96) (center). Cells were not fixed. Cells were treated with FC Receptor Block prior to staining. Lymphocytes were gated.