

For Research Use Only

# CoraLite® Plus 555 Anti-Human MICA/MICB (6D4)



Catalog Number: CL555-65161

## Basic Information

**Catalog Number:**

CL555-65161

**Size:**

100 tests, 5 ul/test

**Source:**

Mouse

**Isotype:**

IgG2a, kappa

**GenBank Accession Number:**

BC016929

**GeneID (NCBI):**

100507436

**UNIPROT ID:**

Q29983

**Full Name:**

MHC class I polypeptide-related sequence A

**Calculated MW:**

383 aa, 43 kDa

**Purification Method:**

Purified by protein-A affinity chromatography

**CloneNo.:**

6D4

**Excitation/Emission maximum wavelengths:**

554 nm / 570 nm

## Applications

**Tested Applications:**

FC

**Species Specificity:**

Human

## Background Information

Human MHC class I chain-related genes located within the HLA class I region of chromosome 6 encode MHC class I chain-related A and B (MICA and MICB) (PMID: 11429322). MICA and MICB are stress-inducible surface molecules that are not associated with  $\beta$  2-microglobulin and do not present peptides (PMID: 9497295). They are expressed in intestinal epithelium and many epithelial tumors (PMID: 10359807). MICA and MICB are ligands for NKG2D which is an activating receptor that is expressed on most natural killer (NK) cells, CD8  $\alpha$   $\beta$  T cells, and  $\gamma$   $\delta$  T cells (PMID: 10426993; 11491531). The monoclonal antibody 6D4 recognizes MICA and MICB.

## Storage

**Storage:**

Store at 2-8°C. Avoid exposure to light. Stable for one year after shipment.

**Storage Buffer:**

PBS with 0.09% sodium azide and 0.5% BSA.

For technical support and original validation data for this product please contact:

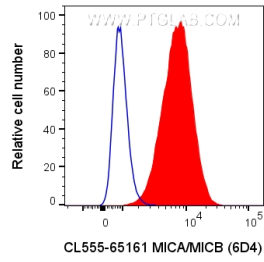
T: 4006900926

E: Proteintech-CN@ptglab.com

W: ptgcn.com

This product is exclusively available under Proteintech Group brand and is not available to purchase from any other manufacturer.

## Selected Validation Data



$1 \times 10^6$  HeLa cells were surface stained with 5  $\mu$ l CoraLite® Plus 555 Anti-Human MICA/MICB (CL555-65161, Clone:6D4) (red), or Mouse IgG2a Isotype Control (blue). Cells were not fixed.