

For Research Use Only

# CoraLite® Plus 555 Anti-Human CD163 (GHI/61)



Catalog Number: CL555-65169

## Basic Information

**Catalog Number:**

CL555-65169

**Size:**

100tests, 5 ul/test

**Source:**

Mouse

**Isotype:**

IgG1, kappa

**GenBank Accession Number:**

BC051281

**GeneID (NCBI):**

9332

**ENSEMBL Gene ID:**

ENSG00000177575

**UNIPROT ID:**

Q86VB7

**Full Name:**

CD163 molecule

**Calculated MW:**

1156 aa, 125 kDa

**Purification Method:**

Purified by protein-A affinity chromatography

**CloneNo.:**

GHI/61

**Excitation/Emission maximum wavelengths:**

554 nm / 570 nm

## Applications

**Tested Applications:**

FC

**Species Specificity:**

Human

## Background Information

CD163, also known as M130, is a membrane glycoprotein which belongs to the scavenger receptor superfamily (PMID: 8370408). It is an acute phase-regulated and signal-inducing macrophage protein expressed exclusively in monocytes and tissue macrophages (PMID: 11196644). CD163 mediates endocytosis of haptoglobin-haemoglobin complexes (PMID: 11196644). The uptake of haptoglobin by macrophages contributes to the recycling of iron and also to the inflammatory response (PMID: 22900885). Soluble CD163 (sCD163), as a result of ectodomain shedding during inflammatory activation of macrophages, circulates in blood and has been suggested as a plasma/serum marker for macrophage activity (PMID: 12570164).

## Storage

**Storage:**

Store at 2-8°C. Avoid exposure to light. Stable for one year after shipment.

**Storage Buffer:**

PBS with 0.09% sodium azide and 0.5% BSA.

For technical support and original validation data for this product please contact:

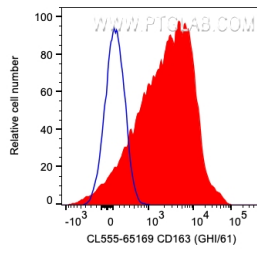
T: 4006900926

E: [Proteintech-CN@ptglab.com](mailto:Proteintech-CN@ptglab.com)

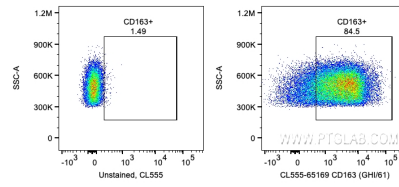
W: [ptgcn.com](http://ptgcn.com)

**This product is exclusively available under Proteintech Group brand and is not available to purchase from any other manufacturer.**

## Selected Validation Data



1X10<sup>6</sup> human PBMCs were surface stained with 5 ul CoraLite® Plus 555 Anti-Human CD163 (CL555-65169, Clone:GHI/61) (red) or unstained. Cells were not fixed. Monocytes and granulocytes were gated.



1X10<sup>6</sup> human PBMCs were surface stained with 5 ul CoraLite® Plus 555 Anti-Human CD163 (CL555-65169, Clone:GHI/61) or unstained. Cells were not fixed. Monocytes and granulocytes were gated.