

For Research Use Only

# CoraLite® Plus 555 Anti-Human CD85j / LILRB1 (GHI/75)

Catalog Number: CL555-65238



## Basic Information

Catalog Number:

CL555-65238

Size:

100tests, 5 ul/test

Source:

Mouse

Isotype:

IgG2b, kappa

GenBank Accession Number:

BC015731

GeneID (NCBI):

10859

UNIPROT ID:

Q8NHL6

Full Name:

leukocyte immunoglobulin-like receptor, subfamily B (with TM and ITIM domains), member 1

Calculated MW:

71 kDa

Purification Method:

N/A

CloneNo.:

GHI/75

Excitation/Emission maxima wavelengths:

554 nm / 570 nm

## Applications

Tested Applications:

FC

Species Specificity:

human

## Background Information

LILRB1, also named as CD85j or ILT2, includes four C2 Ig domains binding HLA class I molecules in the extracellular region and a cytoplasmic domain containing four immunoreceptor tyrosine-based inhibition motifs (ITIM). LILRB1 is a surface glycoprotein detected on the surface of B cells, monocytes, dendritic cells, T cells and NK cells.

## Storage

Storage:

Store at 2-8°C. Avoid exposure to light. Stable for one year after shipment.

Storage Buffer:

PBS with 0.09% sodium azide and 0.5% BSA.

For technical support and original validation data for this product please contact:

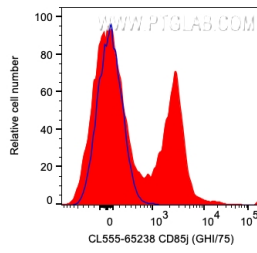
T: 4006900926

E: [Proteintech-CN@ptglab.com](mailto:Proteintech-CN@ptglab.com)

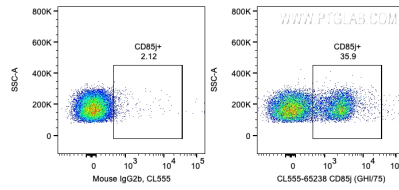
W: [ptgcn.com](http://ptgcn.com)

This product is exclusively available under Proteintech Group brand and is not available to purchase from any other manufacturer.

## Selected Validation Data



1X10<sup>6</sup> human PBMCs were surface stained with 5 ul CoraLite® Plus 555 Anti-Human CD85j / LILRB1 (CL555-65238, Clone:GHI/75) or Mouse IgG2b Isotype Control (66360-3-Ig, Clone: K11B8C4B5). Cells were not fixed. Lymphocytes were gated.



1X10<sup>6</sup> human PBMCs were surface stained with 5 ul CoraLite® Plus 555 Anti-Human CD85j / LILRB1 (CL555-65238, Clone:GHI/75) or Mouse IgG2b Isotype Control. Cells were not fixed. Lymphocytes were gated.