

CoraLite®555-conjugated TOM20 Monoclonal antibody

Catalog Number: **CL555-66777**

Basic Information

Catalog Number: CL555-66777	GenBank Accession Number: BC000882	Purification Method: Protein A purification
Size: 1000 µg/ml	GeneID (NCBI): 9804	CloneNo.: 1D6F5
Source: Mouse	UNIPROT ID: Q15388	Recommended Dilutions: IF 1:50-1:500
Isotype: IgG2b	Full Name: translocase of outer mitochondrial membrane 20 homolog (yeast)	Excitation/Emission maxima wavelengths: 557 nm / 570nm
Immunogen Catalog Number: AG2378	Calculated MW: 145 aa, 16 kDa	
	Observed MW: 16 kDa	

Applications

Tested Applications: FC (Intra), IF/ICC	Positive Controls: IF : HepG2 cells,
Species Specificity: Human	

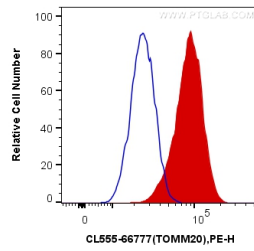
Background Information

TOM20, also named as KIAA0016, belongs to the Tom20 family. It is a central component of the receptor complex responsible for the recognition and translocation of cytosolically synthesized mitochondrial preproteins. Together with TOM22, TOM20 functions as the transit peptide receptor at the surface of the mitochondrion outer membrane and facilitates the movement of preproteins into the TOM40 translocation pore. TOM20 is characterized as major docking receptors to mediate the recognition by different mechanisms.

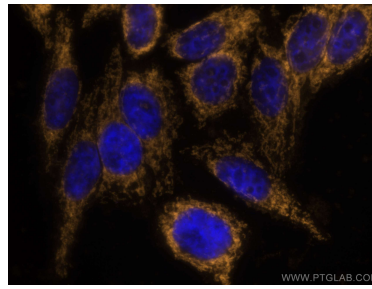
Storage

Storage:
Store at -20°C. Avoid exposure to light.
Storage Buffer:
PBS with 50% Glycerol, 0.05% Proclin300, 0.5% BSA, pH 7.3.
Aliquoting is unnecessary for -20°C storage

Selected Validation Data



1X10⁶ HeLa cells were intracellularly stained with 0.4 ug CoraLite®555 Anti-Human TOM20 (CL555-66777, Clone:1D6F5) (red), or 0.4 ug Control Antibody. Cells were fixed with 4% PFA and permeabilized with Flow Cytometry Perm Buffer (PF00011-C).



Immunofluorescent analysis of (4% PFA) fixed HepG2 cells using CoraLite®555 TOM20 antibody (CL555-66777, Clone: 1D6F5) at dilution of 1:200.