

For Research Use Only

anti-CD16 recombinant VHH, CoraLite® Plus 555



www.ptgcn.com

Catalog Number: CL555-CD16

Basic Information

Catalog Number:
CL555-CD16

Applications:
IF, FC

Host:
Alpaca

Conjugate:
CoraLite® Plus 555

Type:
Nanobody

Class:
Recombinant

RRID:
AB_3665403

Molecular Weight:
15.6 kDa

Description

CL555-CD16 is a recombinant CoraLite® Plus 555 conjugated anti CD16 Nanobody (VHH) that targets CD16 in IF and FC applications, showing reactivity with human samples.

Affinity

2 nM for CD16A, 4 nM for CD16B

Excitation/Emission Maxima Wavelengths

554 nm / 570 nm

Background

CD16 is a 50-70-kDa low affinity Fc receptor found on the surface of natural killer cells, neutrophil polymorphonuclear leukocytes, monocytes and macrophages. CD16 mediates antibody-dependent cellular cytotoxicity (ADCC) and other antibody-dependent responses, such as phagocytosis. CD16 has been identified as Fc receptors Fc γ RIIIa (CD16a) and Fc γ RIIIb (CD16b), encoded by two nearly identical genes, FCGR3A and the FCGR3B.

Storage

Storage:
Store at -20°C

Storage Buffer:
10 mM HEPES pH 7.0, 500 mM NaCl, 5 mM EDTA, 0.09% sodium azide

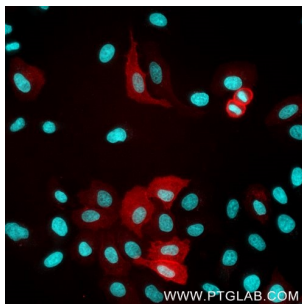
For technical support and original validation data for this product please contact:

T: 4006900926

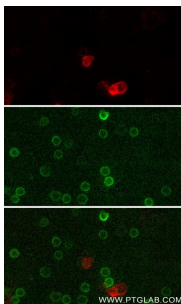
E: Proteintech-CN@ptglab.com
W: www.ptgcn.com

This product is exclusively available under Proteintech Group brand and is not available to purchase from any other manufacturer.

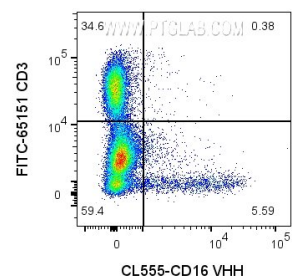
Selected Validation Data



HeLa cells transiently transfected with human CD16 were immunostained with anti-CD16 recombinant VHH, Coralite® Plus 555 (CL555-CD16, 1:500, red). Nuclei were stained with DAPI (cyan). Epifluorescence images were acquired with a 20x objective and post-processed. Note: Immunostaining with CL555-CD16 can be performed live or after formaldehyde fixation.



Live human PBMCs were gravity-sedimented and immunostained with anti-CD16 recombinant VHH, Coralite® Plus 555 (CL555-CD16, red) and anti-CD3 IgG-CL488 (CL488-65151, green). Images were acquired with a 20x objective and post-processed. Dead cells (autofluorescent in all channels including UV and far-red) we subtracted from all channels with ImageJ. Note: Immunostaining with CL555-CD16 can be performed live or after formaldehyde fixation.



1×10^6 human PBMCs were surface stained with 0.25ug Coralite® Plus 555 conjugated CD16 VHH (CL555-CD16) and FITC CD3 (FITC-65151). Cells were not fixed. Cells were treated with FC Receptor Block prior to staining. Lymphocytes and monocytes were gated.