

CoraLite®594-conjugated GFP tag Polyclonal antibody

Catalog Number: **CL594-50430**

Basic Information

Catalog Number:

CL594-50430

Size:

1000 µg/ml

Source:

Rabbit

Isotype:

IgG

Immunogen Catalog Number:

AG2128

GenBank Accession Number:

U73901

GeneID (NCBI):

Full Name:

Calculated MW:

26 kDa

Purification Method:

Antigen affinity purification

Recommended Dilutions:

IF 1:50-1:500

Excitation/Emission maxima wavelengths:

588 nm / 604 nm

Applications

Tested Applications:

IF/ICC

Species Specificity:

aequorea victoria, recombinant protein

Positive Controls:

IF : Transfected HEK-293 cells,

Background Information

Protein tags are protein or peptide sequences located either on the C- or N- terminal of the target protein, which facilitates one or several of the following characteristics: solubility, detection, purification, localization and expression. Green fluorescence protein (GFP) is a protein composed of 238 amino acid residues (26.9 kDa) derived from the Jellyfish *Aequorea victoria*, which emits green light (emission peak at 509 nm) when excited by blue light (excitation peak at 395 nm). GFP has become an invaluable tool in cell biology research, since its intrinsic fluorescence can be visualized in living cells. EGFP contains the double-amino-acid substitutions Phe-64 to Leu and Ser-65 to Thr (previously published as GFPmut1; PMID: 8707053). In contrast to wtGFP, EGFP has a single, strong, red-shifted excitation peak at 488 nm. GFPmut1 fluoresces 35-fold more intensely than wtGFP when excited at 488 nm, due to an increase in its extinction coefficient (Em). This antibody is a rabbit polyclonal antibody raised against full-length eGFP and reactive against all variants of *Aequorea victoria* GFP such as S65T-GFP, RS-GFP, YFP, CFP and eGFP.

Storage

Storage:

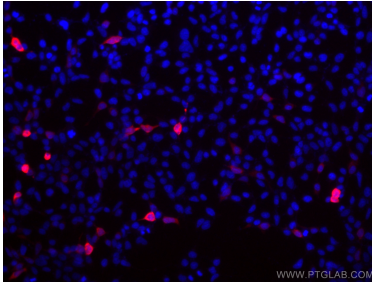
Store at -20°C. Avoid exposure to light.

Storage Buffer:

PBS with 50% Glycerol, 0.05% Proclin300, 0.5% BSA, pH 7.3.

Aliquoting is unnecessary for -20°C storage

Selected Validation Data



Immunofluorescent analysis of (-20°C Ethanol)
fixed Transfected HEK-293 cells using
CoraLite®594 GFP tag antibody (CL594-50430) at
dilution of 1:200.