

For Research Use Only

# CoraLite®594-conjugated ST2 Monoclonal antibody



Catalog Number:CL594-60112

## Basic Information

Catalog Number:

CL594-60112

Size:

1000 µg/ml

Source:

Mouse

Isotype:

IgG1

Immunogen Catalog Number:

AG2555

GenBank Accession Number:

BC030975

GeneID (NCBI):

9173

UNIPROT ID:

Q01638

Full Name:

interleukin 1 receptor-like 1

Calculated MW:

63 kDa, 37 kDa, 30 kDa

Observed MW:

63 kDa

Purification Method:

Protein G purification

CloneNo.:

7A2A7

Excitation/Emission maxima  
wavelengths:

588 nm / 604 nm

## Applications

Tested Applications:

FC (Intra)

Species Specificity:

human, mouse, rat, pig

## Background Information

### Storage

Storage:

Store at -20°C. Avoid exposure to light. Stable for one year after shipment.

Storage Buffer:

PBS with 50% Glycerol, 0.05% Proclin300, 0.5% BSA, pH 7.3.

Aliquoting is unnecessary for -20°C storage

For technical support and original validation data for this product please contact:

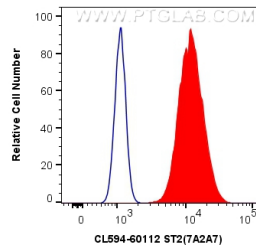
T: 4006900926

E: [Proteintech-CN@ptglab.com](mailto:Proteintech-CN@ptglab.com)

W: [ptgcn.com](http://ptgcn.com)

This product is exclusively available under Proteintech Group brand and is not available to purchase from any other manufacturer.

## Selected Validation Data



1X10<sup>6</sup> HEK-293 cells were intracellularly stained with 0.8 ug CoraLite® 594 Anti-Human ST2 (CL594-60112, Clone: 7A2A7) (red), or 0.8 ug CoraLite® 594 Mouse IgG1 Isotype Control (MOPC-21) (CL594-65124, Clone: MOPC-21) (blue). Cells were fixed with 4% PFA and permeabilized with Flow Cytometry Perm Buffer (PF00011-C).