

For Research Use Only

CoraLite®594-conjugated CD34 Monoclonal antibody



Catalog Number:CL594-60180

Basic Information

Catalog Number: CL594-60180	GenBank Accession Number: BC039146	Purification Method: Protein A purification
Size: 2000 µg/ml	GeneID (NCBI): 947	CloneNo.: 3C8G12
Source: Mouse	UNIPROT ID: P28906	Recommended Dilutions: IF 1:50-1:500
Isotype: IgG2b	Full Name: CD34 molecule	Excitation/Emission maxima wavelengths: 588 nm / 604 nm
Immunogen Catalog Number: AG5996	Calculated MW: 41 kDa	

Applications

Tested Applications: IF-P	Positive Controls: IF : human liver cancer tissue, human tonsillitis tissue
Species Specificity: human	

Background Information

CD34 is a 105- to 120-kDa glycoposphoprotein expressed on the majority of hematopoietic stem/progenitor cells, bone marrow stromal cells, capillary endothelial cells, embryonic fibroblasts, and some nerve tissue. CD34 is a commonly used marker for identifying human hematopoietic stem/progenitor cells and mediates cell adhesion and lymphocyte homing by binding L-selectin and E-selectin ligands. CD34 is also one of the best negative selection markers for characterizing and/or isolating human MSCs from bone marrow and other sources. Along with other positive selection markers (such as CD29, CD44, CD90, CD105 and CD166), negative selection markers (such as CD34 and CD45) are used for MSC identification.

Storage

Storage:
Store at -20°C. Avoid exposure to light. Stable for one year after shipment.
Storage Buffer:
PBS with 50% Glycerol, 0.05% Proclin300, 0.5% BSA, pH 7.3.
Aliquoting is unnecessary for -20°C storage

For technical support and original validation data for this product please contact:

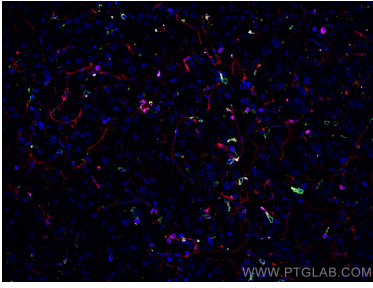
T: 4006900926

E: Proteintech-CN@ptglab.com

W: ptgcn.com

This product is exclusively available under Proteintech Group brand and is not available to purchase from any other manufacturer.

Selected Validation Data



Immunofluorescent analysis of (4% PFA) fixed human liver cancer tissue using CoraLite®594 CD34 antibody (CL594-60180, Clone: 3C8G12) at dilution of 1:100, CoraLite® Plus 647 CD3 antibody (CL647-60181, Clone: 3F3A1, Magenta), CoraLite® Plus 488 CD163 antibody (CL488-16646, green).