

CoraLite®594-conjugated transgelin/SM22 Monoclonal antibody

Catalog Number: CL594-60213

Basic Information

Catalog Number:

CL594-60213

Size:

1000 µg/ml

Source:

Mouse

Isotype:

IgG1

Immunogen Catalog Number:

AG0764

GenBank Accession Number:

BC004927

GeneID (NCBI):

6876

UNIPROT ID:

Q01995

Full Name:

transgelin

Calculated MW:

22 kDa

Observed MW:

18+22 kDa

Purification Method:

Protein G purification

CloneNo.:

2A10C2

Recommended Dilutions:

IF-P 1:50-1:500

**Excitation/Emission maxima
wavelengths:**

588 nm / 604 nm

Applications

Tested Applications:

IF/ICC

Species Specificity:

human, rat, pig, mouse

Positive Controls:

IF-P : mouse heart tissue,

Background Information

The transgelin family is a group of proteins that belong to 22 kDa actin-related corpnin superfamily. Of all three isoforms, transgelin 1 is the best characterized. Transgelin 1, also known as SM22 alpha, is a specific marker for differentiated smooth muscle cells. Transgelin 2, also known as SM22 beta, is expressed by both smooth muscle and non-smooth muscle cells in a temporally and spatially regulated pattern. Transgelin 3, also known as NP25, is only found in highly differentiated neuronal cells.

Storage

Storage:

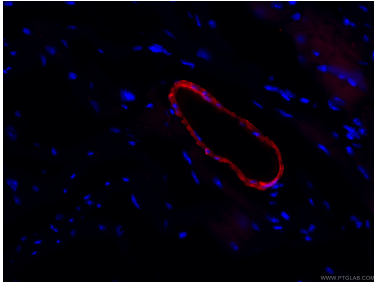
Store at -20°C. Avoid exposure to light. Stable for one year after shipment.

Storage Buffer:

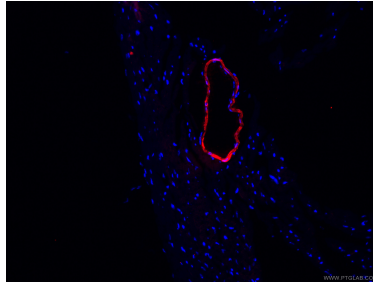
PBS with 50% Glycerol, 0.05% Proclin300, 0.5% BSA, pH 7.3.

Aliquoting is unnecessary for -20°C storage

Selected Validation Data



Immunofluorescent analysis of (4% PFA) fixed mouse heart tissue using CL594-60213 (transgelin/SM22 antibody) at dilution of 1:100.



Immunofluorescent analysis of (4% PFA) fixed mouse heart tissue using CL594-60213 (transgelin/SM22 antibody) at dilution of 1:100.