

For Research Use Only

CoraLite®594-conjugated ATP5C1 Monoclonal antibody



Catalog Number:CL594-60284

Basic Information

Catalog Number:

CL594-60284

Size:

1000 µg/ml

Source:

Mouse

Isotype:

IgG2a

Immunogen Catalog Number:

AG1343

GenBank Accession Number:

BC000931

GeneID (NCBI):

509

UNIPROT ID:

P36542

Full Name:

ATP synthase, H⁺ transporting,
mitochondrial F1 complex, gamma
polypeptide 1

Calculated MW:

33 kDa

Observed MW:

33 kDa

Purification Method:

Protein A purification

CloneNo.:

1B5A2

Recommended Dilutions:

IF 1:50-1:500

Excitation/Emission maxima
wavelengths:

588 nm / 604 nm

Applications

Tested Applications:

IF/ICC

Species Specificity:

human

Positive Controls:

IF : HepG2 cells,

Background Information

ATP5C1(ATP synthase subunit gamma, mitochondrial) is also named as ATP5C, ATP5CL1 and belongs to the ATPase gamma chain family. Some scientists reported the complete sequence of the gene for the human ATP synthase gamma subunit and described tissue-specific isoforms of the subunit generated by alternative splicing of exon 9. The liver (L) isoform differed from the heart (H) isoform by the addition of a single amino acid (asp273) at the C terminus. (PMID:8227057).

Storage

Storage:

Store at -20°C. Avoid exposure to light.

Storage Buffer:

PBS with 50% Glycerol, 0.05% Proclin300, 0.5% BSA, pH 7.3.

Aliquoting is unnecessary for -20°C storage

For technical support and original validation data for this product please contact:

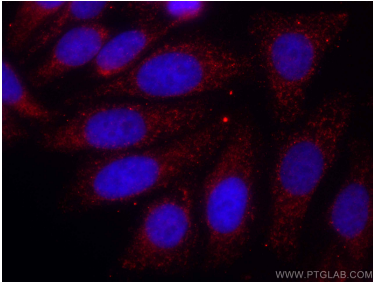
T: 4006900926

E: Proteintech-CN@ptglab.com

W: ptgcn.com

This product is exclusively available under Proteintech Group brand and is not available to purchase from any other manufacturer.

Selected Validation Data



Immunofluorescent analysis of (4% PFA) fixed HepG2 cells using CoraLite®594 ATP5C1 antibody (CL594-60284, Clone: 1B5A2) at dilution of 1:50.