

For Research Use Only

# CoraLite®594-conjugated Prostein Monoclonal antibody



Catalog Number:CL594-60343

## Basic Information

<b>Catalog Number:</b> CL594-60343	<b>GenBank Accession Number:</b> BC050416	<b>Purification Method:</b> Protein A purification
<b>Size:</b> 1000 µg/ml	<b>GeneID (NCBI):</b> 85414	<b>CloneNo.:</b> 5E12E2
<b>Source:</b> Mouse	<b>UNIPROT ID:</b> Q96JT2	<b>Recommended Dilutions:</b> IF 1:50-1:500
<b>Isotype:</b> IgG2b	<b>Full Name:</b> solute carrier family 45, member 3	<b>Excitation/Emission maxima wavelengths:</b> 588 nm / 604 nm
<b>Immunogen Catalog Number:</b> AG5463	<b>Calculated MW:</b> 59 kDa	
	<b>Observed MW:</b> 55-59 kDa	

## Applications

<b>Tested Applications:</b> IF-P	<b>Positive Controls:</b> IF : human prostate cancer tissue,
<b>Species Specificity:</b> human	

## Background Information

Prostein is a prostate tissue-specific protein whose expression is highly restricted to normal and cancerous prostate tissues. Anti-prostein is useful for the identification of prostate adenocarcinomas and is a good marker to identify prostatic origin in metastatic cancer.

## Storage

**Storage:**  
Store at -20°C. Avoid exposure to light.  
**Storage Buffer:**  
PBS with 50% Glycerol, 0.05% Proclin300, 0.5% BSA, pH 7.3.  
Aliquoting is unnecessary for -20°C storage

For technical support and original validation data for this product please contact:

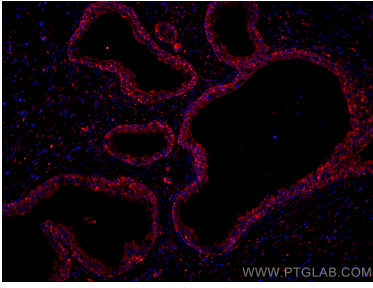
T: 4006900926

E: Proteintech-CN@ptglab.com

W: ptgcn.com

This product is exclusively available under Proteintech Group brand and is not available to purchase from any other manufacturer.

## Selected Validation Data



Immunofluorescent analysis of (4% PFA) fixed human prostate cancer tissue using CoraLite®594 Prostein antibody (CL594-60343, Clone: 5E12E2) at dilution of 1:200.