

CoraLite®594 Anti-Human CD107a / LAMP1 (H4A3)

Catalog Number: CL594-65051

Basic Information

Catalog Number:

CL594-65051

Size:

100ug, 500 µg/ml

Source:

Mouse

Isotype:

IgG1, kappa

GenBank Accession Number:

BC006345

GeneID (NCBI):

3916

ENSEMBL Gene ID:

ENSG00000185896

UNIPROT ID:

P11279

Full Name:

lysosomal-associated membrane protein 1

Purification Method:

Protein G purification

CloneNo.:

H4A3

Recommended Dilutions:

IF 1:200-1:800

Excitation/Emission maxima wavelengths:

588 nm / 604 nm

Applications

Tested Applications:

FC (Intra), IF/ICC

Species Specificity:

Human

Positive Controls:

IF : HeLa cells,

Background Information

LAMP1 (CD107a) is a heavily glycosylated membrane protein enriched in the lysosomal membrane. LAMP1 is extensively glycosylated with asparagine-linked oligosaccharides which protect it from intracellular proteolysis (PMID: 10521503). Although LAMP1 is expressed largely in the endosome-lysosomal membrane of cells, it is also found on the plasma membrane (PMID: 16168398). Elevated LAMP1 expression at the cell surface has also been detected during platelet and granulocytic cell activation, as well as in some tumor cells (PMID: 29085473). LAMP1 functions to provide selectins with carbohydrate ligands. This protein has also been shown to be a marker of degranulation on lymphocytes such as CD8+ and NK cells and may also play a role in tumor cell differentiation and metastasis (PMID: 18835598; 29085473; 9426697).

Storage

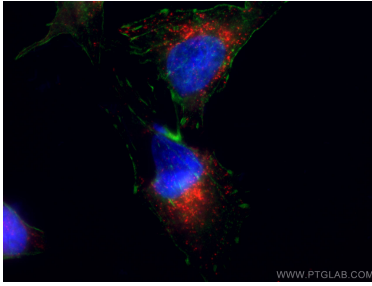
Storage:

Store at 2-8°C. Avoid exposure to light. Stable for one year after shipment.

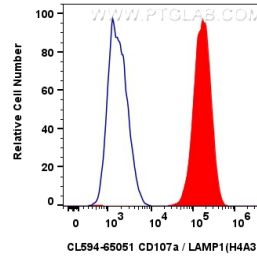
Storage Buffer:

PBS with 0.1% sodium azide and 0.5% BSA, pH 7.3.

Selected Validation Data



Immunofluorescent analysis of (-20°C Ethanol) fixed HeLa cells using CoraLite®594-conjugated CD107a antibody (CL594-65051, Clone: H4A3) at dilution of 1:400. F-actin was stained using CL488-phalloidin (green) and DNA was stained by DAPI (blue).



1x10⁶ HeLa cells were intracellularly stained with 0.4 ug CoraLite®594 Anti-Human CD107a / LAMP1 (CL594-65051, Clone:H4A3)(red), or 0.4 ug CoraLite®594 Mouse IgG1 Isotype Control (MOPC-21) (CL594-65124, Clone: MOPC-21) (blue). Cells were fixed with 4% PFA and permeabilized with Flow Cytometry Perm Buffer (PF00011-C).