

For Research Use Only

CoraLite® Plus 594 Anti-Human CD45 (2D1)



Catalog Number: CL594-65082

Basic Information

Catalog Number: CL594-65082	GenBank Accession Number: BC014239	Purification Method: Affinity purification
Size: 100tests, 5 µl/test	GeneID (NCBI): 5788	CloneNo.: 2D1
Source: Mouse	ENSEMBL Gene ID: ENSG00000081237	Excitation/Emission maxima wavelengths: 594 nm / 615 nm
Isotype: IgG1, kappa	Full Name: protein tyrosine phosphatase, receptor type, C	

Applications

Tested Applications:
FC

Species Specificity:
human

Background Information

CD45, also known as protein tyrosine phosphatase, receptor type C, is a type I transmembrane protein expressed on the surface of all haematopoietic cells with the exception of erythrocytes and platelets (PMID: 3489673; 28615666). CD45 is a pan-haematopoietic cell marker and has been shown to be essential for T- and B-cell activation and signalling (PMID: 9429890; 16378097).

Storage

Storage:
Store at 2-8°C. Avoid exposure to light.

Storage Buffer:
PBS with 0.09% sodium azide and 0.5% BSA.

For technical support and original validation data for this product please contact:

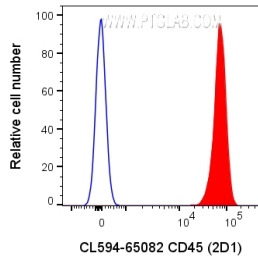
T: 4006900926

E: Proteintech-CN@ptglab.com

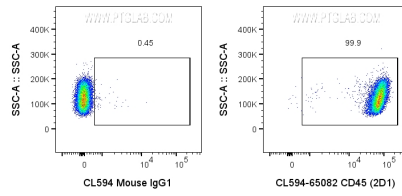
W: ptgcn.com

This product is exclusively available under Proteintech Group brand and is not available to purchase from any other manufacturer.

Selected Validation Data



1x10⁶ human PBMCs were surface stained with 5 ul CoraLite® Plus 594 Anti-Human CD45 (CL594-65082, Clone: 2D1) or CoraLite®594 Mouse IgG1 Isotype Control. Cells were not fixed. Lymphocytes were gated.



1x10⁶ human PBMCs were surface stained with 5 ul CoraLite® Plus 594 Anti-Human CD45 (CL594-65082, Clone: 2D1) or CoraLite®594 Mouse IgG1 Isotype Control. Cells were not fixed. Lymphocytes were gated.