

For Research Use Only

# CoraLite® Plus 594 Anti-Human CD8 (SK1)



Catalog Number: **CL594-65146**

## Basic Information

Catalog Number:

CL594-65146

Size:

100tests, 5 ul/test

Source:

Mouse

Isotype:

IgG1, kappa

GenBank Accession Number:

BC025715

GeneID (NCBI):

925

ENSEMBL Gene ID:

ENSG00000153563

Full Name:

CD8a molecule

Calculated MW:

235 aa, 26 kDa

Purification Method:

Affinity purification

CloneNo.:

SK1

Excitation/Emission maxima wavelengths:

594 nm / 615 nm

## Applications

Tested Applications:

FC

Species Specificity:

human

## Background Information

CD8 is a transmembrane glycoprotein composed of two disulfide-linked chains. It can be present as a homodimer of CD8 $\alpha$  or as a heterodimer of CD8 $\alpha$  and CD8 $\beta$  (PMID: 3264320; 8253791). CD8 is found on most thymocytes. The majority of class I-restricted T cells express mostly the CD8 $\alpha$   $\beta$  heterodimer while CD8 $\alpha$   $\alpha$  homodimers alone have been found on some gut intraepithelial T cells, on some T cell receptor (TCR)  $\gamma$   $\delta$  T cells and on NK cells (PMID: 2111591; 1831127; 8420975). CD8 acts as a co-receptor that binds to MHC class-I and participates in cytotoxic T cell activation (PMID: 8499079). During T cell development, CD8 is required for positive selection of CD4-/CD8+ T cells (PMID: 1968084).

## Storage

Storage:

Store at 2-8°C. Avoid exposure to light.

Storage Buffer:

PBS with 0.09% sodium azide and 0.5% BSA.

For technical support and original validation data for this product please contact:

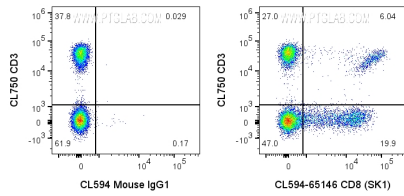
T: 4006900926

E: [Proteintech-CN@ptglab.com](mailto:Proteintech-CN@ptglab.com)

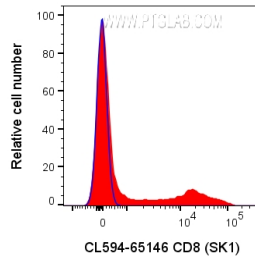
W: [ptgcn.com](http://ptgcn.com)

**This product is exclusively available under Proteintech Group brand and is not available to purchase from any other manufacturer.**

## Selected Validation Data



1x10<sup>6</sup> human PBMCs were surface stained with CL750 Anti-Human CD3 and 5 ul CoraLite® Plus 594 Anti-Human CD8 (CL594-65146, Clone:SK1) or CoraLite®594 Mouse IgG1 Isotype Control. Cells were not fixed. Lymphocytes were gated.



1x10<sup>6</sup> human PBMCs were surface stained with 5 ul CoraLite® Plus 594 Anti-Human CD8 (CL594-65146, Clone:SK1) or CoraLite®594 Mouse IgG1 Isotype Control. Cells were not fixed. Lymphocytes were gated.