

For Research Use Only

CoraLite® Plus 594 Anti-Human CD42b (AK2)

Catalog Number: CL594-65163



Basic Information

Catalog Number:

CL594-65163

Size:

100tests, 5 ul/test

Source:

Mouse

Isotype:

IgG1

GenBank Accession Number:

BC027955

GeneID (NCBI):

2811

ENSEMBL Gene ID:

ENSG00000185245

UNIPROT ID:

P07359

Full Name:

glycoprotein Ib (platelet), alpha polypeptide

Calculated MW:

626 aa, 69 kDa

Purification Method:

Purified by protein-A affinity chromatography

CloneNo.:

AK2

Excitation/Emission maximum wavelengths:

594 nm / 615 nm

Applications

Tested Applications:

FC

Species Specificity:

human

Background Information

CD42b, also known as platelet glycoprotein Ib alpha chain (GPIb alpha), is a type I transmembrane glycoprotein of 135-145 kDa (PMID: 2656709). It is expressed on platelets and megakaryocytes. CD42b and CD42c (GPIb beta) are linked by a disulphide bond to form GPIb (PMID: 7660135). GPIb forms a noncovalent complex with CD42a (GPIX) and CD42d (GPV) and acts as a receptor for von Willebrand factor (vWF) and thrombin (PMID: 7660135; 3759960). The GPIb-V-IX complex mediates vWF-dependent platelet adhesion to blood vessels. Defects in the expression of CD42b result in Bernard-Soulier syndromes and platelet-type von Willebrand disease (PMID: 9371310).

Storage

Storage:

Store at 2-8°C. Avoid exposure to light. Stable for one year after shipment.

Storage Buffer:

PBS with 0.09% sodium azide and 0.5% BSA.

For technical support and original validation data for this product please contact:

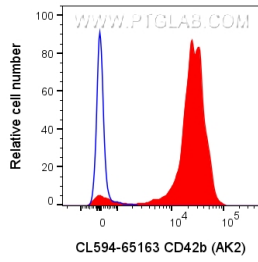
T: 4006900926

E: Proteintech-CN@ptglab.com

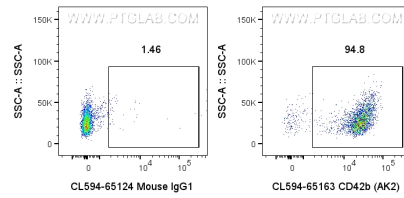
W: ptgcn.com

This product is exclusively available under Proteintech Group brand and is not available to purchase from any other manufacturer.

Selected Validation Data



100ul human platelet-rich plasma (diluted 1:2 in PBS) was surface stained with 5 ul CoraLite® Plus 594 Anti-Human CD42b (CL594-65163, Clone: AK2) or CoraLite®594 Mouse IgG1 Isotype Control (CL594-65124). Cells were not fixed.



100ul human platelet-rich plasma (diluted 1:2 in PBS) was surface stained with 5 ul CoraLite® Plus 594 Anti-Human CD42b (CL594-65163, Clone: AK2) or CoraLite®594 Mouse IgG1 Isotype Control (CL594-65124). Cells were not fixed.