

For Research Use Only

# CoraLite® Plus 594 Anti-Human CD1a (HI149)

Catalog Number: CL594-65172



## Basic Information

Catalog Number:

CL594-65172

Concentration:

100tests, 5 ul/test

Source:

Mouse

Isotype:

IgG1, kappa

GenBank Accession Number:

BC031645

GeneID (NCBI):

909

UNIPROT ID:

P06126

Full Name:

CD1a molecule

Calculated MW:

327 aa, 37 kDa

Purification Method:

Unknow

CloneNo.:

HI149

Excitation/Emission maxima  
wavelengths:

594 nm / 615 nm

## Applications

Tested Applications:

FC

Species Specificity:

human

## Background Information

CD1a is an antigen-presenting protein that binds self and non-self lipid and glycolipid antigens and presents them to T-cell receptors on natural killer T-cells. During protein synthesis and maturation, CD1 family members bind endogenous lipids that are replaced by lipid or glycolipid antigens when the proteins are internalized and pass through endosomes, before trafficking back to the cell surface.

## Storage

Storage:

Store at 2-8°C. Avoid exposure to light. Stable for one year after shipment.

Storage Buffer:

PBS with 0.09% sodium azide and 0.5% BSA.

For technical support and original validation data for this product please contact:

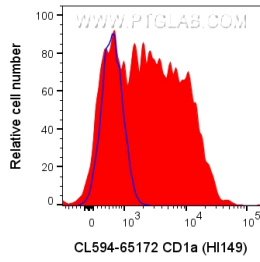
T: 4006900926

E: [Proteintech-CN@ptglab.com](mailto:Proteintech-CN@ptglab.com)

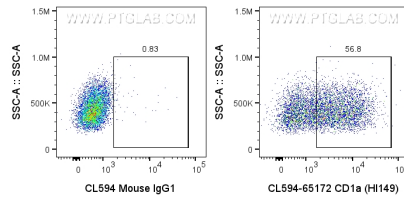
W: [ptgcn.com](http://ptgcn.com)

**This product is exclusively available under Proteintech Group brand and is not available to purchase from any other manufacturer.**

## Selected Validation Data



1x10<sup>6</sup> MOLT-4 cells were surface stained with 5 ul CoraLite® Plus 594 Anti-Human CD1a (CL594-65172, Clone: HI149) or CoraLite®594 Mouse IgG1 Isotype Control (CL594-65124, Clone: MOPC-21). Cells were not fixed.



1x10<sup>6</sup> MOLT-4 cells were surface stained with 5 ul CoraLite® Plus 594 Anti-Human CD1a (CL594-65172, Clone: HI149) or CoraLite®594 Mouse IgG1 Isotype Control (CL594-65124, Clone: MOPC-21). Cells were not fixed.