

For Research Use Only

# CoraLite®594 Anti-Human CD11c (BU15)

Catalog Number:CL594-65196



## Basic Information

**Catalog Number:**

CL594-65196

**Size:**

100tests, 5 ul/test

**Source:**

Mouse

**Isotype:**

IgG1, kappa

**GenBank Accession Number:**

BC038237

**GeneID (NCBI):**

3687

**ENSEMBL Gene ID:**

ENSG00000140678

**UNIPROT ID:**

P20702

**Full Name:**

integrin, alpha X (complement component 3 receptor 4 subunit)

**Calculated MW:**

1169 aa, 129 kDa

**Purification Method:**

Protein G purification

**CloneNo.:**

BU15

**Excitation/Emission maxima wavelengths:**

588 nm / 604 nm

## Applications

**Tested Applications:**

FC

**Species Specificity:**

human

## Background Information

Integrins are cell adhesion receptors that are heterodimers composed of non-covalently associated  $\alpha$  and  $\beta$  subunits (PMID: 9779984). CD11c, also known as integrin  $\alpha$  X, is a type I transmembrane glycoprotein present on a variety of cells, including monocytes/macrophages, granulocytes, a subset of B cells, NK cells and dendritic cells (PMID: 2897326; 1680915; 1694698; 17389580). As a result of its high level of expression on most dendritic cells, CD11c is typically considered to be a marker of conventional dendritic cells (PMID: 27119555). CD11c forms an  $\alpha$  /  $\beta$  heterodimer with CD18 (integrin  $\beta$  2). CD11c/CD18 acts a receptor for fibrinogen and is important in monocyte adhesion and chemotaxis (PMID: 1671533).

## Storage

**Storage:**

Store at 2-8°C. Avoid exposure to light. Stable for one year after shipment.

**Storage Buffer:**

PBS with 0.09% sodium azide and 0.5% BSA.

For technical support and original validation data for this product please contact:

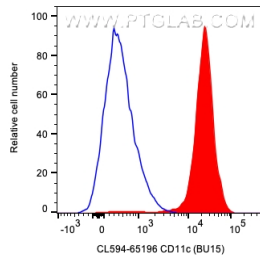
T: 4006900926

E: Proteintech-CN@ptglab.com

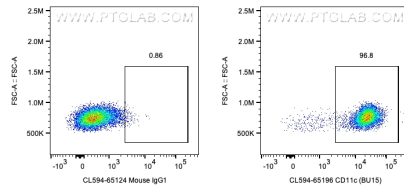
W: ptgcn.com

**This product is exclusively available under Proteintech Group brand and is not available to purchase from any other manufacturer.**

## Selected Validation Data



$1 \times 10^6$  human PBMCs were surface stained with 5  $\mu$ l CoraLite<sup>®</sup>594 Anti-Human CD11c (CL594-65196, Clone: BU15) or CoraLite<sup>®</sup>594 Mouse IgG1 Isotype Control (CL594-65124, Clone: MOPC-21). Cells were treated with FC Receptor Block prior to staining. Cells were not fixed. Monocytes were gated.



$1 \times 10^6$  human PBMCs were surface stained with 5  $\mu$ l CoraLite<sup>®</sup>594 Anti-Human CD11c (CL594-65196, Clone:BU15) or CoraLite<sup>®</sup>594 Mouse IgG1 Isotype Control (CL594-65124, Clone: MOPC-21). Cells were treated with FC Receptor Block prior to staining. Cells were not fixed. Monocytes were gated.