

For Research Use Only

# CoraLite® Plus 594 Anti-Human CD45RA (F8-11-13)



Catalog Number: CL594-65226

## Basic Information

<b>Catalog Number:</b> CL594-65226	<b>GenBank Accession Number:</b> BC014239	<b>Purification Method:</b> Affinity purification
<b>Size:</b> 100tests, 5 ul/test	<b>GeneID (NCBI):</b> 5788	<b>CloneNo.:</b> F8-11-13
<b>Source:</b> Mouse	<b>ENSEMBL Gene ID:</b> ENSG00000081237	<b>Excitation/Emission maxima wavelengths:</b> 594 nm / 615 nm
<b>Isotype:</b> IgG1, kappa	<b>UNIPROT ID:</b> P08575	
	<b>Full Name:</b> protein tyrosine phosphatase, receptor type, C	
	<b>Calculated MW:</b> 1304 aa, 147 kDa	

## Applications

**Tested Applications:**  
FC

**Species Specificity:**  
Human

## Background Information

CD45, also known as protein tyrosine phosphatase, receptor type C, is a type I transmembrane protein expressed on the surface of all haematopoietic cells with the exception of erythrocytes and platelets (PMID: 3489673; 28615666). CD45 is a pan-haematopoietic cell marker and has been shown to be essential for T- and B-cell activation and signalling (PMID: 9429890; 16378097). CD45 exists as multiple isoforms due to alternative splicing of three exons (4, 5, and 6, designated A, B, and C) in the extracellular domain (PMID: 12414720). CD45RA is expressed on naïve T cells, B cells, and monocytes (PMID: 1830500; 14687231).

## Storage

**Storage:**  
Store at 2-8°C. Avoid exposure to light. Stable for one year after shipment.

**Storage Buffer:**  
PBS with 0.09% sodium azide and 0.5% BSA.

For technical support and original validation data for this product please contact:

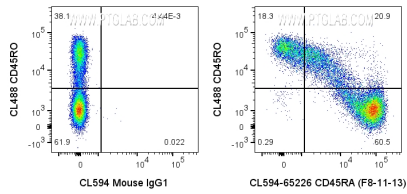
T: 4006900926

E: [Proteintech-CN@ptglab.com](mailto:Proteintech-CN@ptglab.com)

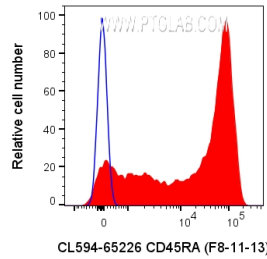
W: [ptgcn.com](http://ptgcn.com)

**This product is exclusively available under Proteintech Group brand and is not available to purchase from any other manufacturer.**

## Selected Validation Data



1x10<sup>6</sup> human PBMCs were surface stained with 5 ul CoraLite® Plus 594 Anti-Human CD45RA (CL594-65226, Clone:F8-11-13) or CoraLite®594 Mouse IgG1 Isotype Control, and CL488-conjugated Anti-Human CD45RO. Cells were not fixed. Lymphocytes were gated.



1x10<sup>6</sup> human PBMCs were surface stained with 5 ul CoraLite® Plus 594 Anti-Human CD45RA (CL594-65226, Clone:F8-11-13) or CoraLite®594 Mouse IgG1 Isotype Control. Cells were not fixed. Lymphocytes were gated.