

For Research Use Only

CoraLite® Plus 594 Anti-Human LRP1 (5A6)

Catalog Number: CL594-65233



Basic Information

Catalog Number: CL594-65233	GenBank Accession Number: BC045107	Purification Method: N/A
Size: 100tests, 5 ul/test	GeneID (NCBI): 4035	CloneNo.: 5A6
Source: Mouse	UNIPROT ID: Q07954	Excitation/Emission maxima wavelengths: 594 nm / 615 nm
Isotype: IgG2b	Full Name: low density lipoprotein-related protein 1 (alpha-2-macroglobulin receptor)	
	Calculated MW: 505 kDa	

Applications

Tested Applications:
FC

Species Specificity:
human

Background Information

LRP1 (Prolow-density lipoprotein receptor-related protein 1), also known as A2MR, APOER and CD91, is a type I transmembrane protein that belongs to the LDLR family. LRP1 is synthesized as a transmembrane glycosylated precursor of 600 kDa, and is subsequently cleaved to generate a large 515-kDa N-terminal extracellular subunit and an 85-kDa C-terminal transmembrane subunit, which are noncovalently associated with one another (PMID: 2112085; 8546712). LRP1 is a multifunctional receptor involved in the clearance of a large number of diverse ligands and modulating various cellular processes. LRP1 is implicated in conditions such as atherosclerosis, cancer and neurodegenerative diseases (PMID: 28381441).

Storage

Storage:
Store at 2-8°C. Avoid exposure to light. Stable for one year after shipment.

Storage Buffer:
PBS with 0.09% sodium azide and 0.5% BSA.

For technical support and original validation data for this product please contact:

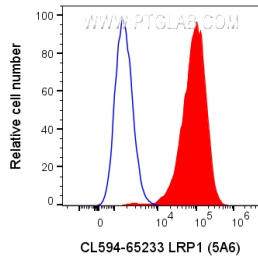
T: 4006900926

E: Proteintech-CN@ptglab.com

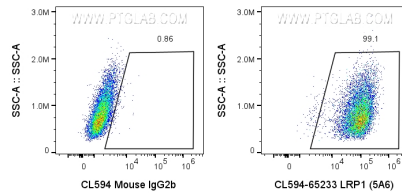
W: ptgcn.com

This product is exclusively available under Proteintech Group brand and is not available to purchase from any other manufacturer.

Selected Validation Data



1×10^6 U-87 MG cells were surface stained with 5 ul CoraLite® Plus 594 Anti-Human LRP1 (CL594-65233, Clone:5A6) or CoraLite® 594 Mouse IgG2b Isotype Control (CL594-65128, Clone: MPC-11). Cells were not fixed.



1×10^6 U-87 MG cells were surface stained with 5 ul CoraLite® Plus 594 Anti-Human LRP1 (CL594-65233, Clone:5A6) or CoraLite® 594 Mouse IgG2b Isotype Control (CL594-65128, Clone: MPC-11). Cells were not fixed.