

For Research Use Only

# CoraLite® Plus 594 Anti-Human CD85j / LILRB1 (GHI/75)

Catalog Number: CL594-65238



## Basic Information

<b>Catalog Number:</b> CL594-65238	<b>GenBank Accession Number:</b> BC015731	<b>Purification Method:</b> N/A
<b>Size:</b> 100tests, 5 ul/test	<b>GeneID (NCBI):</b> 10859	<b>CloneNo.:</b> GHI/75
<b>Source:</b> Mouse	<b>UNIPROT ID:</b> Q8NHL6	<b>Excitation/Emission maxima wavelengths:</b> 594 nm / 615 nm
<b>Isotype:</b> IgG2b, kappa	<b>Full Name:</b> leukocyte immunoglobulin-like receptor, subfamily B (with TM and ITIM domains), member 1	
	<b>Calculated MW:</b> 71 kDa	

## Applications

**Tested Applications:**  
FC

**Species Specificity:**  
human

## Background Information

LILRB1, also named as CD85j or ILT2, includes four C2 Ig domains binding HLA class I molecules in the extracellular region and a cytoplasmic domain containing four immunoreceptor tyrosine-based inhibition motifs (ITIM). LILRB1 is a surface glycoprotein detected on the surface of B cells, monocytes, dendritic cells, T cells and NK cells.

## Storage

**Storage:**  
Store at 2-8°C. Avoid exposure to light. Stable for one year after shipment.

**Storage Buffer:**  
PBS with 0.09% sodium azide and 0.5% BSA.

For technical support and original validation data for this product please contact:

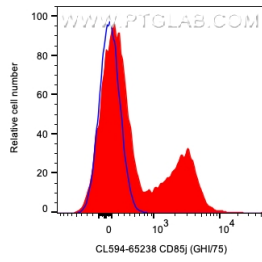
T: 4006900926

E: [Proteintech-CN@ptglab.com](mailto:Proteintech-CN@ptglab.com)

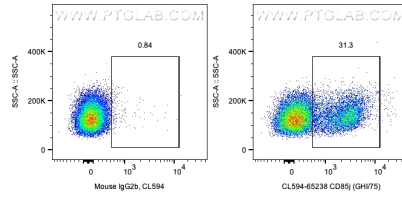
W: [ptgcn.com](http://ptgcn.com)

This product is exclusively available under Proteintech Group brand and is not available to purchase from any other manufacturer.

## Selected Validation Data



1x10<sup>6</sup> human PBMCs were surface stained with 5 ul CoraLite® Plus 594 Anti-Human CD85j / LILRB1 (CL594-65238, Clone:GHI/75) or CoraLite® 594 Mouse IgG2b Isotype Control (CL594-65128, Clone: MPC-11). Cells were not fixed. Lymphocytes were gated.



1x10<sup>6</sup> human PBMCs were surface stained with 5 ul CoraLite® Plus 594 Anti-Human CD85j / LILRB1 (CL594-65238, Clone:GHI/75) or CoraLite® 594 Mouse IgG2b Isotype Control (CL594-65128, Clone: MPC-11). Cells were not fixed. Lymphocytes were gated.