

For Research Use Only

# CoraLite® Plus 594 Anti-Human CD35 (E11)



Catalog Number: **CL594-65254**

## Basic Information

<b>Catalog Number:</b> CL594-65254	<b>GenBank Accession Number:</b> NML_000573	<b>Purification Method:</b> N/A
<b>Size:</b> 100tests, 5 µl/test	<b>GeneID (NCBI):</b> 1378	<b>CloneNo.:</b> E11
<b>Source:</b> Mouse	<b>ENSEMBL Gene ID:</b> ENSG00000203710	<b>Excitation/Emission maxima wavelengths:</b> 594 nm / 615 nm
<b>Isotype:</b> IgG1, kappa	<b>UNIPROT ID:</b> P17927	
	<b>Full Name:</b> complement component (3b/4b) receptor 1 (Knops blood group)	
	<b>Calculated MW:</b> 224 kDa	

## Applications

**Tested Applications:**  
FC

**Species Specificity:**  
Human

## Background Information

CD35, also known as complement receptor type 1 (CR1) or C3b/C4b receptor, is a single-chain glycoprotein consisting of 30 repeating homologous protein domains known as short consensus repeats (~60 amino acids each) followed by transmembrane and cytoplasmic domains (PMID: 8765013). CD35 is variably expressed by granulocytes, monocytes, B cells, some T cells, erythrocytes, follicular dendritic cells, Langerhans cells, and glomerular podocytes (PMID: 19004497). CD35 acts as a receptor for C3b and C4b and plays important roles in the regulation of the complement cascade and clearance of immune complexes.

## Storage

**Storage:**  
Store at 2-8°C. Avoid exposure to light. Stable for one year after shipment.

**Storage Buffer:**  
PBS with 0.09% sodium azide and 0.5% BSA.

For technical support and original validation data for this product please contact:

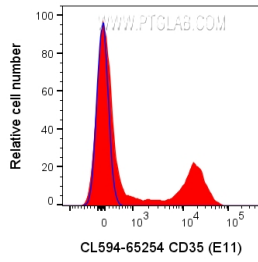
T: 4006900926

E: [Proteintech-CN@ptglab.com](mailto:Proteintech-CN@ptglab.com)

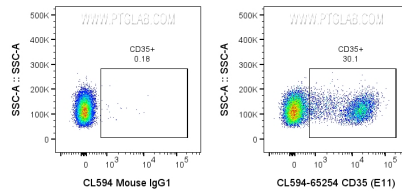
W: [ptgcn.com](http://ptgcn.com)

**This product is exclusively available under Proteintech Group brand and is not available to purchase from any other manufacturer.**

## Selected Validation Data



1x10<sup>6</sup> human PBMCs were surface stained with 5 ul CoraLite® Plus 594 Anti-Human CD35 (CL594-65254, Clone:E11), or CoraLite® 594 Mouse IgG1 Isotype Control. Cells were not fixed. Lymphocytes were gated.



1x10<sup>6</sup> human PBMCs were surface stained with 5 ul CoraLite® Plus 594 Anti-Human CD35 (CL594-65254, Clone:E11), or CoraLite® 594 Mouse IgG1 Isotype Control. Cells were not fixed. Lymphocytes were gated.