

For Research Use Only

CoraLite® Plus 594 Anti-Human CD56 (B-A19)

Catalog Number: CL594-65264



Basic Information

Catalog Number:

CL594-65264

Size:

100tests, 5 ul/test

Source:

Mouse

Isotype:

IgG1

GenBank Accession Number:

BC014205

GeneID (NCBI):

4684

ENSEMBL Gene ID:

ENSG00000149294

Full Name:

neural cell adhesion molecule 1

Purification Method:

Affinity purification

CloneNo.:

B-A19

Excitation/Emission maxima wavelengths:

594 nm / 615 nm

Applications

Tested Applications:

FC

Species Specificity:

human

Background Information

Neural cell adhesion molecule 1 (NCAM1, also known as CD56) is a cell adhesion glycoprotein of the immunoglobulin (Ig) superfamily. It is a multifunction protein involved in synaptic plasticity, neurodevelopment, and neurogenesis. NCAM1 is expressed on human neurons, glial cells, skeletal muscle cells, NK cells and a subset of T cells, and the expression is observed in a wide variety of human tumors, including myeloma, myeloid leukemia, neuroendocrine tumors, Wilms' tumor, neuroblastoma, and NK/T cell lymphomas.

Storage

Storage:

Store at 2-8°C. Avoid exposure to light. Stable for one year after shipment.

Storage Buffer:

PBS with 0.09% sodium azide and 0.5% BSA.

For technical support and original validation data for this product please contact:

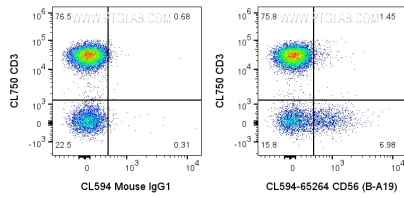
T: 4006900926

E: Proteintech-CN@ptglab.com

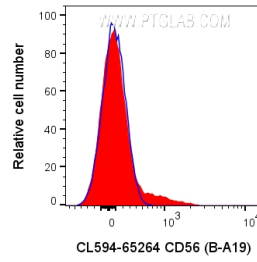
W: ptgcn.com

This product is exclusively available under Proteintech Group brand and is not available to purchase from any other manufacturer.

Selected Validation Data



1x10⁶ human PBMCs were surface stained with CL750 Anti-Human CD3 (CL750-65151) and 5 ul CoraLite® Plus 594 Anti-Human CD56 (CL594-65264, Clone:B-A19) or CoraLite® 594 Mouse IgG1 Isotype Control (CL594-65124). Cells were not fixed. Lymphocytes were gated.



1x10⁶ human PBMCs were surface stained with 5 ul CoraLite® Plus 594 Anti-Human CD56 (CL594-65264, Clone:B-A19) or CoraLite® 594 Mouse IgG1 Isotype Control (CL594-65124). Cells were not fixed. Lymphocytes were gated.