

For Research Use Only

CoraLite® Plus 594 Anti-Human CD244 (2B4.69)



Catalog Number: CL594-65270

Basic Information

Catalog Number:

CL594-65270

Size:

100 tests, 5 ul/test

Source:

Mouse

Isotype:

IgG1

GenBank Accession Number:

BC028073

GeneID (NCBI):

51744

Full Name:

CD244 molecule, natural killer cell
receptor 2B4

Purification Method:

Affinity purification

CloneNo.:

2B4.69

Excitation/Emission maxima
wavelengths:

594 nm / 615 nm

Applications

Tested Applications:

FC

Species Specificity:

Human

Background Information

CD244, also known as SLAMF4 or 2B4, is a type I transmembrane glycoprotein belonging to the signaling lymphocyte activation molecule (SLAM) family. It consists of an extracellular segment with two immunoglobulin (Ig)-like domains, a transmembrane region, and a cytoplasmic domain containing tyrosine-based motifs (PMID: 9841922; 30546369). CD244 is present on natural killer (NK) cells, γ δ T cells, a subset of CD8+ T cells, monocytes, basophils, dendritic cells, and myeloid-derived suppressor cells (MDSCs) (PMID: 30546369). It binds to CD48 with high affinity and transmits stimulatory or inhibitory signals that regulate immune function (PMID: 9841922; 18523281).

Storage

Storage:

Store at 2-8°C. Avoid exposure to light.

Storage Buffer:

PBS with 0.09% sodium azide and 0.5% BSA.

For technical support and original validation data for this product please contact:

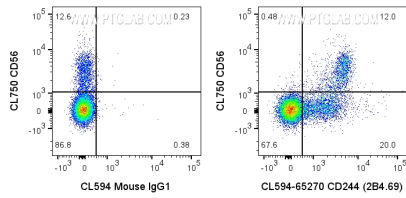
T: 4006900926

E: Proteintech-CN@ptglab.com

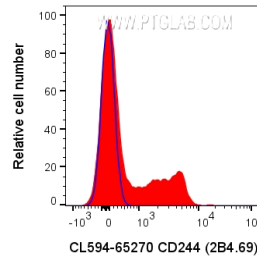
W: ptgcn.com

This product is exclusively available under Proteintech Group brand and is not available to purchase from any other manufacturer.

Selected Validation Data



1x10⁶ human PBMCs were surface stained with CL750 Anti-Human CD56 and 5 ul CoraLite® Plus 594 Anti-Human CD244 (2B4.69) (CL594-65270) or CoraLite®594 Mouse IgG1 Isotype Control. Cells were not fixed. Lymphocytes were gated.



1x10⁶ human PBMCs were surface stained with 5 ul CoraLite® Plus 594 Anti-Human CD244 (2B4.69) (CL594-65270) or CoraLite®594 Mouse IgG1 Isotype Control. Cells were not fixed. Lymphocytes were gated.