

For Research Use Only

# CoraLite® Plus 594 Anti-Human CD33 (WM53)



Catalog Number: CL594-65272

## Basic Information

Catalog Number:

CL594-65272

Size:

100 tests, 5 µl/test

Source:

Mouse

Isotype:

IgG1, kappa

GenBank Accession Number:

BC028152

GeneID (NCBI):

945

Full Name:

CD33 molecule

Calculated MW:

364 aa, 40 kDa

Purification Method:

Affinity purification

CloneNo.:

WM53

Excitation/Emission maxima wavelengths:

594 nm / 615 nm

## Applications

Tested Applications:

FC

Species Specificity:

human

## Background Information

CD33, also referred to as Siglec-3, is a 67-kDa glycosylated transmembrane protein of sialic acid-binding immunoglobulin-like lectin (siglec) family. CD33 is expressed on monocytes, myeloid progenitors, granulocytes, mast cells, some T cells. It may mediate cell-to-cell adhesion and act as a receptor that inhibits the proliferation of normal and leukemic myeloid cells.

## Storage

Storage:

Store at 2-8°C. Avoid exposure to light.

Storage Buffer:

PBS with 0.09% sodium azide and 0.5% BSA.

For technical support and original validation data for this product please contact:

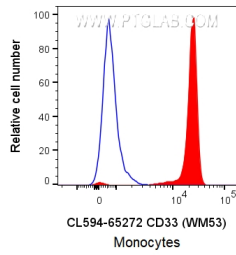
T: 4006900926

E: [Proteintech-CN@ptglab.com](mailto:Proteintech-CN@ptglab.com)

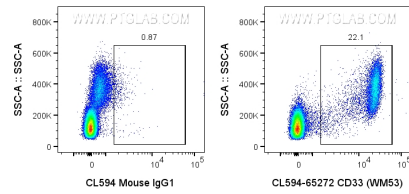
W: [ptgcn.com](http://ptgcn.com)

This product is exclusively available under Proteintech Group brand and is not available to purchase from any other manufacturer.

## Selected Validation Data



1x10<sup>6</sup> FC receptor blocked human PBMCs were surface stained with 5 ul CoraLite® Plus 594 Anti-Human CD33 (CL594-65272, Clone: WM53) (red) or CoraLite®594 Mouse IgG1 Isotype Control (blue). Cells were not fixed. Monocytes were gated.



1x10<sup>6</sup> FC receptor blocked human PBMCs were surface stained with 5 ul CoraLite® Plus 594 Anti-Human CD33 (CL594-65272, Clone: WM53) or CoraLite®594 Mouse IgG1 Isotype Control. Cells were not fixed. Lymphocytes and monocytes were gated.