

For Research Use Only

# CoraLite®594 Anti-Human CD107b / LAMP2 (H4B4) Mouse IgG2a Recombinant Antibody

Catalog Number: CL594-65566



## Basic Information

<b>Catalog Number:</b> CL594-65566	<b>GenBank Accession Number:</b> BC002965	<b>Purification Method:</b> Protein A purification
<b>Concentration:</b> 100tests, 5 ul/test	<b>GeneID (NCBI):</b> 3920	<b>CloneNo.:</b> H4B4
<b>Source:</b> Mouse	<b>ENSEMBL Gene ID:</b> ENSG00000005893	<b>Excitation/Emission maxima wavelengths:</b> 588 nm / 604 nm
<b>Isotype:</b> IgG2a	<b>Full Name:</b> lysosomal-associated membrane protein 2	
	<b>Calculated MW:</b> 45 kDa	

## Applications

**Tested Applications:**  
FC (Intra)

**Species Specificity:**  
human

## Background Information

LAMP2 (CD107b) is a Lysosomal membrane glycoprotein. LAMP2 is extensively glycosylated with asparagine-linked oligosaccharides which protect it from intracellular proteolysis (PMID: 10521503). Although LAMP-2 is localized primarily in the endosome-lysosomal membrane of cells, it is also found on the plasma membrane under certain circumstances, e.g., after platelet activation, during granulocytic differentiation and activation, and in some tumor cells (PMID: 12221139). LAMP is involved in lysosomal stability and autophagy (PMID: 12221139). This glycoprotein provides selectins with carbohydrate ligands. LAMP2 may play a role in tumor cell metastasis (PMID 9426697).

## Storage

**Storage:**  
Store at 2-8°C. Avoid exposure to light. Stable for one year after shipment.

**Storage Buffer:**  
PBS with 0.09% sodium azide.

For technical support and original validation data for this product please contact:

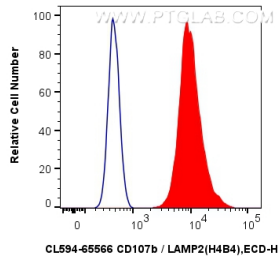
T: 4006900926

E: [Proteintech-CN@ptglab.com](mailto:Proteintech-CN@ptglab.com)

W: [ptgcn.com](http://ptgcn.com)

**This product is exclusively available under Proteintech Group brand and is not available to purchase from any other manufacturer.**

## Selected Validation Data



1x10<sup>6</sup> Jurkat cells were intracellularly stained with 5 $\mu$ l CoraLite<sup>®</sup>594 Anti-Human CD107b / LAMP2 (H4B4) Mouse IgG2a RecAb (CL594-65566, Clone: H4B4) (red) or CoraLite<sup>®</sup>594 Mouse IgG2a Isotype Control (C1.18.4) (CL594-65208, Clone: C1.18.4) (blue). Cells were fixed with 4% PFA and permeabilized with Flow Cytometry Perm Buffer (PF00011-C).