

For Research Use Only

# CoraLite®594 Anti-Human CD3 (UCHT1) Mouse IgG2a Recombinant Antibody

Catalog Number: CL594-65570



## Basic Information

**Catalog Number:**

CL594-65570

**Size:**

100tests, 5 ul/test

**Source:**

Mouse

**Isotype:**

IgG2a

**GenBank Accession Number:**

BC049847

**GeneID (NCBI):**

916

**ENSEMBL Gene ID:**

ENSG00000198851

**Full Name:**

CD3e molecule, epsilon (CD3-TCR complex)

**Calculated MW:**

207 aa, 23 kDa

**Purification Method:**

Protein A purification

**CloneNo.:**

UCHT1

**Excitation/Emission maxima wavelengths:**

588 nm / 604 nm

## Applications

**Tested Applications:**

FC

**Species Specificity:**

human

## Background Information

CD3 is a multimeric protein associated with the T-cell receptor (TCR) to form a complex involved in antigen recognition and signal transduction (PMID: 15885124). CD3 is composed of CD3  $\gamma$ ,  $\delta$ ,  $\epsilon$ , and  $\zeta$  chains (PMID: 1826255). It is expressed by thymocytes in a developmentally regulated manner, T cells, and some NK cells (PMID: 3289580). The TCR recognizes antigens bound to major histocompatibility complex (MHC) molecules. TCR-mediated peptide-MHC recognition is transmitted to the CD3 complex, leading to the intracellular signal transduction (PMID: 11985657).

## Storage

**Storage:**

Store at 2-8°C. Avoid exposure to light. Stable for one year after shipment.

**Storage Buffer:**

PBS with 0.09% sodium azide and 0.5% BSA.

For technical support and original validation data for this product please contact:

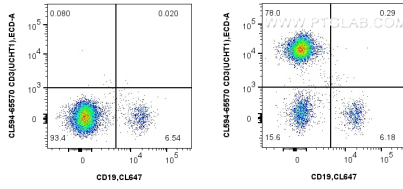
T: 4006900926

E: [Proteintech-CN@ptglab.com](mailto:Proteintech-CN@ptglab.com)

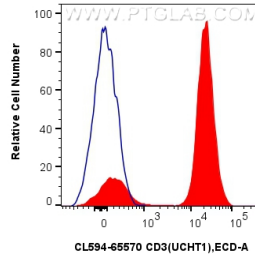
W: [ptgcn.com](http://ptgcn.com)

**This product is exclusively available under Proteintech Group brand and is not available to purchase from any other manufacturer.**

## Selected Validation Data



1x10<sup>6</sup> human PBMCs were surface stained with CoraLite® Plus 647 Anti-Human CD19 and 5 ul CoraLite® 594 Anti-Human CD3 (UCHT1) Mouse IgG2a Recombinant Antibody (CL594-65570, Clone: UCHT1) (right), or CoraLite® 594 Mouse IgG2a Isotype Control (C1.18.4) (CL594-65208, Clone: C1.18.4) (left). Cells were not fixed. Lymphocytes were gated.



1x10<sup>6</sup> human PBMCs were surface stained with 5 ul CoraLite® 594 Anti-Human CD3 (UCHT1) Mouse IgG2a Recombinant Antibody (CL594-65570, Clone: UCHT1) (red), or CoraLite® 594 Mouse IgG2a Isotype Control (C1.18.4) (CL594-65208, Clone: C1.18.4) (blue). Cells were not fixed. Lymphocytes were gated.