

For Research Use Only

CoraLite® Plus 594 Anti-Human CD26 (BA5b) Mouse IgG2a Recombinant Antibody



Catalog Number: **CL594-65574**

Basic Information

Catalog Number:

CL594-65574

Size:

100 tests, 5 ul/test

Source:

Mouse

Isotype:

IgG2a

GenBank Accession Number:

BC013329

GeneID (NCBI):

1803

Full Name:

dipeptidyl-peptidase 4

Calculated MW:

88 kDa

Purification Method:

Protein A purification

CloneNo.:

BA5b

Excitation/Emission maxima
wavelengths:

594 nm / 615 nm

Applications

Tested Applications:

FC

Species Specificity:

human

Background Information

CD26, also known as DPP4 (dipeptidyl peptidase-4), is a 110 kDa type II cell-surface glycoprotein widely expressed on T cells, activated B cells, activated NK cells and myeloid cells as well as on epithelial cells, fibroblasts, mesothelium, and endothelial cells of a variety of tissues (PMID:33777580; 26919392). It has ecto-enzyme activity in its extracellular domain and cleaves amino-terminal dipeptides with either L-proline or L-alanine at the penultimate position (PMID: 9553764). CD26 plays roles in diverse biological processes such as immunoregulation, glucose homeostasis, and tumorigenesis (PMID: 33777580).

Storage

Storage:

Store at 2-8°C. Avoid exposure to light.

Storage Buffer:

PBS with 0.09% sodium azide and 0.5% BSA.

For technical support and original validation data for this product please contact:

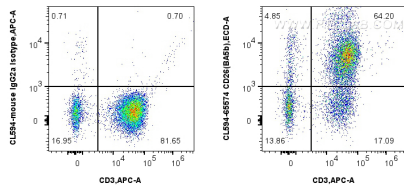
T: 4006900926

E: Proteintech-CN@ptglab.com

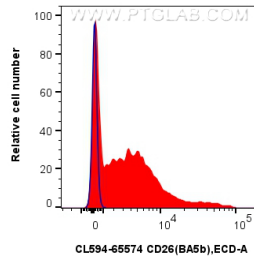
W: ptgcn.com

This product is exclusively available under Proteintech Group brand and is not available to purchase from any other manufacturer.

Selected Validation Data



1x10⁶ human PBMCs were surface stained with APC Anti-Human CD3 and 5 ul CoraLite® Plus 594 Anti-Human CD26 (BA5b) Mouse IgG2a Recombinant Antibody (CL594-65574, Clone:BA5b) or CoraLite® 594 Mouse IgG2a Isotype Control (C1.18.4) (CL594-65208, Clone: C.1.18.4). Cells were not fixed.



1x10⁶ human PBMCs were surface stained with 5 ul CoraLite® Plus 594 Anti-Human CD26 (BA5b) Mouse IgG2a Recombinant Antibody (CL594-65574, Clone:BA5b) (red), or CoraLite® 594 Mouse IgG2a Isotype Control (C1.18.4) (CL594-65208, Clone: C1.18.4) (blue). Cells were not fixed.