

For Research Use Only

# CoraLite®594 Anti-Human CD11b (ICRF44) Mouse IgG2a Recombinant Antibody



Catalog Number: ~~CL594-65582~~

## Basic Information

<b>Catalog Number:</b> CL594-65582	<b>GenBank Accession Number:</b> BC096346	<b>Purification Method:</b> Protein A purification
<b>Size:</b> 100tests, 5 µl/test	<b>GeneID (NCBI):</b> 3684	<b>CloneNo.:</b> ICRF44
<b>Source:</b> Mouse	<b>ENSEMBL Gene ID:</b> ENSG00000169896	<b>Excitation/Emission maxima wavelengths:</b> 588 nm / 604 nm
<b>Isotype:</b> IgG2a	<b>Full Name:</b> integrin, alpha M (complement component 3 receptor 3 subunit)	
	<b>Calculated MW:</b> 1152 aa, 127 kDa	

## Applications

**Tested Applications:**  
FC  
**Species Specificity:**  
human

## Background Information

Integrins are cell adhesion receptors that are heterodimers composed of non-covalently associated  $\alpha$  and  $\beta$  subunits (PMID: 9779984). CD11b, also known as Integrin alpha M or CR3A, belongs to the integrin alpha chain family. CD11b forms an  $\alpha$  /  $\beta$  heterodimer with CD18 (integrin  $\beta$  2). CD11b/CD18 is implicated in various adhesive interactions of monocytes, macrophages and granulocytes as well as in mediating the uptake of complement-coated particles and pathogens (PMID: 9558116; 20008295). CD11b/CD18 is a receptor for the complement protein fragment iC3b, and is also a receptor for fibrinogen, factor X and ICAM1 (PMID: 2971974; 15485828).

## Storage

**Storage:**  
Store at 2-8°C. Avoid exposure to light.  
**Storage Buffer:**  
PBS with 0.09% sodium azide and 0.5% BSA.

For technical support and original validation data for this product please contact:

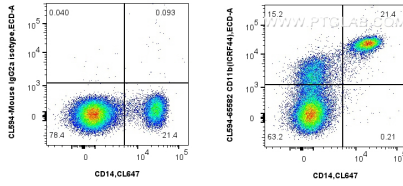
T: 4006900926

E: [Proteintech-CN@ptglab.com](mailto:Proteintech-CN@ptglab.com)

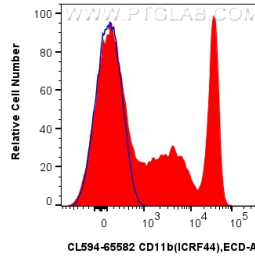
W: [ptgcn.com](http://ptgcn.com)

**This product is exclusively available under Proteintech Group brand and is not available to purchase from any other manufacturer.**

## Selected Validation Data



1x10<sup>6</sup> human PBMCs were surface stained with CoraLite® Plus 647 Anti-Human CD14, and 5 ul CoraLite® 594 Anti-Human CD11b (ICRF44) Mouse IgG2a Recombinant Antibody (CL594-65582, Clone: ICRF44) (right), or CoraLite® 594 Mouse IgG2a Isotype Control (C1.18.4) (CL594-65208, Clone: C1.18.4) (left). Cells were incubated with FC Receptor Block prior to staining. Cells were not fixed.



1x10<sup>6</sup> human PBMCs were surface stained with 5 ul CoraLite® 594 Anti-Human CD11b (ICRF44) Mouse IgG2a Recombinant Antibody (CL594-65582, Clone: ICRF44)(red), or CoraLite® 594 Mouse IgG2a Isotype Control (C1.18.4) (CL594-65208, Clone: C1.18.4) (blue). Cells were incubated with FC Receptor Block prior to staining. Cells were not fixed.