

For Research Use Only

CoraLite®594 Anti-Human ALCAM (3A6) Mouse IgG2a Recombinant Antibody



Catalog Number: **CL594-65611**

Basic Information

Catalog Number: CL594-65611	GenBank Accession Number: BC057809	Purification Method: Protein A purification
Size: 100tests, 5 ul/test	GeneID (NCBI): 214	CloneNo.: 3A6
Source: Mouse	Full Name: activated leukocyte cell adhesion molecule	Excitation/Emission maxima wavelengths: 588 nm / 604 nm
Isotype: IgG2a	Calculated MW: 105 kDa	

Applications

Tested Applications:
FC

Species Specificity:
human

Background Information

Activated leukocyte cell adhesion molecule (ALCAM, also known as CD166) is a cell adhesion molecule that belongs to the immunoglobulin superfamily. It is involved in cell-cell adhesion through homophilic and heterophilic (to CD6) interactions. ALCAM is widely expressed in a variety of normal tissues and cell types, including activated T cells and monocytes, epithelial cells, fibroblasts, neuronal cells, hepatocytes, and bone marrow mesenchymal stem cells (PMID: 7760007; 25221999). Altered ALCAM expression has been associated with the differentiation state and progression in some neoplasms including melanoma, prostate, colorectal, and breast cancers (PMID: 20461761; 18172759).

Storage

Storage:
Store at 2-8°C. Avoid exposure to light.
Storage Buffer:
PBS with 0.09% sodium azide and 0.5% BSA.

For technical support and original validation data for this product please contact:

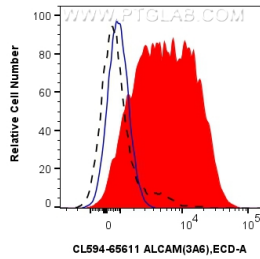
T: 4006900926

E: Proteintech-CN@ptglab.com

W: ptgcn.com

This product is exclusively available under Proteintech Group brand and is not available to purchase from any other manufacturer.

Selected Validation Data



1×10^6 PHA treated human PBMCs were surface stained with 5 μ l CoraLite®594 Anti-Human ALCAM Mouse IgG2a Recombinant Antibody (CL594-65611, Clone: 3A6) (red) or CoraLite®594 Mouse IgG2a Isotype Control (CL594-65208, Clone: C1.18.4) (blue). 1×10^6 untreated human PBMCs were surface stained with 5 μ l CoraLite®594 Anti-Human ALCAM Mouse IgG2a Recombinant Antibody (CL594-65611, Clone: 3A6) (black, dashed). Cells were not fixed.