

For Research Use Only

CoraLite®594 Anti-Human CD16 (3G8) Mouse IgG2a Recombinant Antibody

Catalog Number: CL594-65612



Basic Information

Catalog Number:
CL594-65612

Size:
100tests, 5 ul/test

Source:
Mouse

Isotype:
IgG2a

GenBank Accession Number:
BC017865

GeneID (NCBI):
2214

ENSEMBL Gene ID:
ENSG00000203747

Full Name:
Fc fragment of IgG, low affinity IIIa,
receptor (CD16a)

Calculated MW:
254 aa, 29 kDa

Purification Method:
Protein A purification

CloneNo.:
3G8

**Excitation/Emission maxima
wavelengths:**
588 nm / 604 nm

Applications

Tested Applications:
FC

Species Specificity:
human

Background Information

CD16 is a 50-70-kDa low affinity Fc receptor found on the surface of natural killer cells, neutrophil polymorphonuclear leukocytes, monocytes and macrophages. CD16 mediates antibody-dependent cellular cytotoxicity (ADCC) and other antibody-dependent responses, such as phagocytosis. CD16 has been identified as Fc receptors Fc γ RIIIa (CD16a) and Fc γ RIIIb (CD16b), encoded by two nearly identical genes, FCGR3A and the FCGR3B. Clone 3G8 recognizes both the CD16a and CD16b (PMID: 7592758).

Storage

Storage:
Store at 2-8°C. Avoid exposure to light. Stable for one year after shipment.
Storage Buffer:
PBS with 0.09% sodium azide and 0.5% BSA.

For technical support and original validation data for this product please contact:

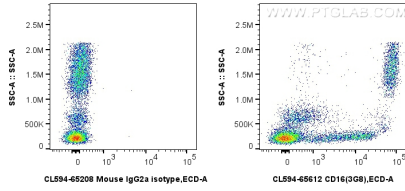
T: 4006900926

E: Proteintech-CN@ptglab.com

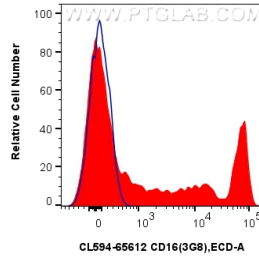
W: ptgcn.com

This product is exclusively available under Proteintech Group brand and is not available to purchase from any other manufacturer.

Selected Validation Data



1x10⁶ human peripheral blood leukocytes were surface stained with 5 ul CoraLite®594 Anti-Human CD16 (3G8) Mouse IgG2a RecAb (CL594-65612, Clone:3G8), or CoraLite®594 Mouse IgG2a Isotype Control (C1.18.4) (CL594-65208, Clone: C1.18.4). Cells were incubated with FC Receptor Block prior to staining. Cells were not fixed.



1x10⁶ human peripheral blood leukocytes were surface stained with 5 ul CoraLite®594 Anti-Human CD16 (3G8) Mouse IgG2a RecAb (CL594-65612, Clone:3G8)(red), or CoraLite®594 Mouse IgG2a Isotype Control (C1.18.4) (CL594-65208, Clone: C1.18.4) (blue). Cells were incubated with FC Receptor Block prior to staining. Cells were not fixed.