

For Research Use Only

# CoraLite®594-conjugated Alpha Tubulin Monoclonal antibody

Catalog Number:CL594-66031

Featured Product

5 Publications



## Basic Information

**Catalog Number:**

CL594-66031

**Source:**

Mouse

**Isotype:**

IgG2b

**Immunogen Catalog Number:**

AG18034

**GenBank Accession Number:**

BC009314

**GeneID (NCBI):**

10376

**UNIPROT ID:**

P68363

**Full Name:**

tubulin, alpha 1b

**Calculated MW:**

50 kDa

**Observed MW:**

50-55 kDa

**Purification Method:**

Protein A purification

**CloneNo.:**

1E4C11

**Recommended Dilutions:**

WB: 1:300-1:500

IF/ICC: 1:50-1:500

FC (Intra): 0.80 ug per 10<sup>6</sup> cells in a 100 µl suspension

**Excitation/Emission maxima wavelengths:**

588 nm / 604 nm

## Applications

**Tested Applications:**

WB, IF/ICC, FC (Intra)

**Cited Applications:**

IF

**Species Specificity:**

human, mouse, rat, canine

**Cited Species:**

human, mouse

**Positive Controls:**

WB : HeLa cells, HEK-293 cells, HSC-T6 cells, NIH/3T3 cells

IF/ICC : HepG2 cells, HeLa cells

FC (Intra) : HepG2 cells,

## Background Information

There are five tubulins in human cells: alpha, beta, gamma, delta, and epsilon. Tubulins are conserved across species. They form heterodimers, which multimerize to form a microtubule filament. An alpha and beta tubulin heterodimer is the basic structural unit of microtubules. The heterodimer does not come apart once formed. The alpha and beta tubulins, which are each about 55 kDa MW, are homologous but not identical. Alpha tubulin is useful for scientists across fields as an internal control due to its high, ubiquitous expression pattern. Tubulin expression may vary according to resistance to antimicrobial and antimitotic drugs. This antibody is CL594(Ex/Em 593 nm/614 nm) conjugated.

## Notable Publications

Author	Pubmed ID	Journal	Application
Juan Lin	36430853	Int J Mol Sci	IF
Shizhen Dai	35741354	Biology (Basel)	IF
Long-Fei Wu	35354913	Exp Mol Med	IF

## Storage

**Storage:**

Store at -20°C. Avoid exposure to light. Stable for one year after shipment.

**Storage Buffer:**

PBS with 50% glycerol, 0.05% Proclin300, 0.5% BSA, pH7.3

Aliquoting is unnecessary for -20°C storage

For technical support and original validation data for this product please contact:

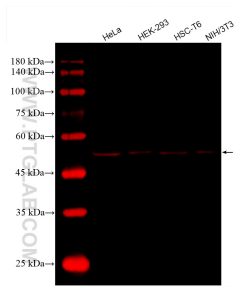
T: 4006900926

E: Proteintech-CN@ptglab.com

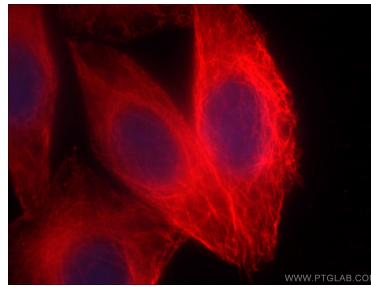
W: ptgcn.com

This product is exclusively available under Proteintech Group brand and is not available to purchase from any other manufacturer.

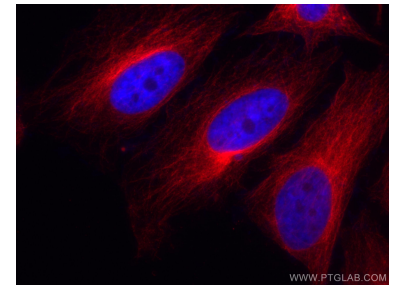
## Selected Validation Data



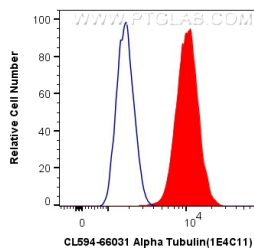
Various lysates were subjected to SDS PAGE followed by western blot with CL594-66031 (Alpha Tubulin antibody) at dilution of 1:500 incubated at room temperature for 1.5 hours.



Immunofluorescent analysis of (-20°C Ethanol) fixed HepG2 cells using CL594-66031 (alpha Tubulin antibody) at dilution of 1:100.



Immunofluorescent analysis of (4% PFA) fixed HeLa cells using the Coralite®594-conjugated version of this antibody, CL594-66031 (alpha Tubulin antibody), at dilution of 1:100.



1X10<sup>6</sup> HepG2 cells were intracellularly stained with 0.8 ug Coralite®594 Anti-Human Alpha Tubulin (CL594-66031, Clone:1E4C11) (red), or 0.8 ug Mouse IgG2b Isotype Control (CL594-66360-3, Clone: K11B8C4B5) (blue). Cells were fixed with 4% PFA and permeabilized with Flow Cytometry Perm Buffer.