

For Research Use Only

CoraLite®594-conjugated ORM2-Specific Monoclonal antibody



Catalog Number:CL594-66217

Basic Information

Catalog Number:

CL594-66217

Size:

1000 µg/ml

Source:

Mouse

Isotype:

IgG1

Immunogen Catalog Number:

AG18984

GenBank Accession Number:

BC015964

GeneID (NCBI):

5005

UNIPROT ID:

P19652

Full Name:

orosomuroid 2

Calculated MW:

24 kDa

Observed MW:

45 kDa

Purification Method:

Protein G purification

CloneNo.:

4E9H10

Recommended Dilutions:

IF/ICC 1:50-1:500

Excitation/Emission maxima
wavelengths:

588 nm / 604 nm

Applications

Tested Applications:

IF/ICC

Species Specificity:

human

Positive Controls:

IF/ICC : HepG2 cells,

Background Information

ORM2, also named as AGP2 and OMD 2, belongs to the calycin superfamily and Lipocalin family. It functions as transport protein in the blood stream. ORM2 binds various hydrophobic ligands in the interior of its beta-barrel domain. It also binds synthetic drugs and influences their distribution and availability. ORM2 appears to function in modulating the activity of the immune system during the acute-phase reaction. ORM2 is one of the conserved endoplasmic reticulum membrane proteins which regulating lipid homeostasis and protein quality control. This antibody can specially recognize ORM2. It recognizes a band about 45 kDa in human plasma which may be due to the glycosylation of ORM2 or the dimer formation of the protein.

Storage

Storage:

Store at -20°C. Avoid exposure to light. Stable for one year after shipment.

Storage Buffer:

PBS with 50% Glycerol, 0.05% Proclin300, 0.5% BSA, pH 7.3.

Aliquoting is unnecessary for -20°C storage

For technical support and original validation data for this product please contact:

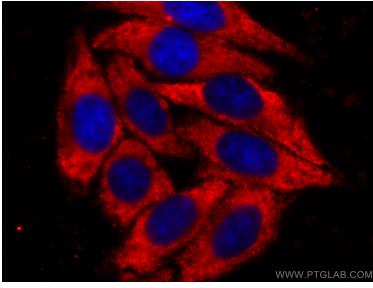
T: 4006900926

E: Proteintech-CN@ptglab.com

W: ptgcn.com

This product is exclusively available under Proteintech Group brand and is not available to purchase from any other manufacturer.

Selected Validation Data



Immunofluorescent analysis of (-20°C Ethanol) fixed HepG2 cells using CoraLite®594 ORM2-Specific antibody (CL594-66217, Clone: 4E9H10) at dilution of 1:200.