

For Research Use Only

CoraLite®594-conjugated Mammaglobin A Monoclonal antibody



Catalog Number:CL594-66237

Basic Information

Catalog Number: CL594-66237	GenBank Accession Number: BC128252	Purification Method: Protein G purification
Size: 1000 µg/ml	GeneID (NCBI): 4250	CloneNo.: 2E5D4
Source: Mouse	UNIPROT ID: Q13296	Recommended Dilutions: IF 1:50-1:500
Isotype: IgG1	Full Name: secretoglobin, family 2A, member 2	Excitation/Emission maxima wavelengths: 588 nm / 604 nm
Immunogen Catalog Number: AG22485	Calculated MW: 93 aa, 10 kDa	

Applications

Tested Applications:
IF-P
Species Specificity:
human

Positive Controls:
IF : human breast cancer tissue,

Background Information

Mammaglobin A, also known as SCGB2A2, is a member of the secretoglobin superfamily. Mammaglobin A is a breast cancer-associated antigen almost exclusively over-expressed in primary and metastatic human breast cancers, making it a specific molecular marker and a potential therapeutic target for breast cancer. This monoclonal antibody is raised against full-length of 93-amino acid human mammaglobin A.

Storage

Storage:
Store at -20°C. Avoid exposure to light.
Storage Buffer:
PBS with 50% Glycerol, 0.05% Proclin300, 0.5% BSA, pH 7.3.
Aliquoting is unnecessary for -20°C storage

For technical support and original validation data for this product please contact:

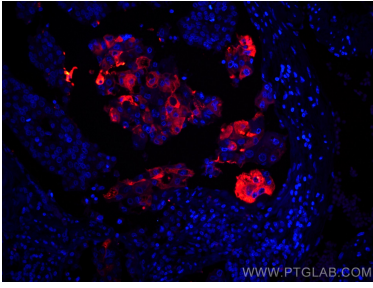
T: 4006900926

E: Proteintech-CN@ptglab.com

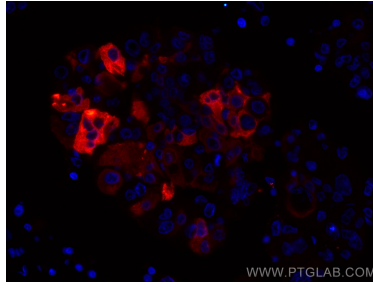
W: ptgcn.com

This product is exclusively available under Proteintech Group brand and is not available to purchase from any other manufacturer.

Selected Validation Data



Immunofluorescent analysis of (4% PFA) fixed human breast cancer tissue using CoraLite®594 Mammaglobin A antibody (CL594-66237, Clone: 2E5D4) at dilution of 1:200.



Immunofluorescent analysis of (4% PFA) fixed human breast cancer tissue using CoraLite®594 Mammaglobin A antibody (CL594-66237, Clone: 2E5D4) at dilution of 1:200.