

For Research Use Only

# CoraLite®594-conjugated TUBB3-specific/TUJ1 Monoclonal antibody



Catalog Number: CL594-66375 **2 Publications**

## Basic Information

<b>Catalog Number:</b> CL594-66375	<b>GenBank Accession Number:</b> NM_001197181	<b>Purification Method:</b> Protein G purification
<b>Size:</b> 1000 µg/ml	<b>GeneID (NCBI):</b> 10381	<b>CloneNo.:</b> 1F8G10
<b>Source:</b> Mouse	<b>Full Name:</b> tubulin, beta 3	<b>Recommended Dilutions:</b> WB 1:1000-1:6000 IF 1:50-1:500
<b>Isotype:</b> IgG1	<b>Calculated MW:</b> 55 kDa	<b>Excitation/Emission maxima wavelengths:</b> 588 nm / 604 nm

## Applications

<b>Tested Applications:</b> FC (Intra), IF/ICC, IF-P, WB	<b>Positive Controls:</b> WB : Neuro-2a cells, IF : mouse brain tissue,
<b>Cited Applications:</b> IF, IHC	
<b>Species Specificity:</b> human, mouse, rat	
<b>Cited Species:</b> mouse	

## Background Information

TUBB3, the class III  $\beta$  tubulin or Tuj1, is selectively expressed in testis and neurons of the central and peripheral nervous system. It has been widely used as a marker for neurons. Aberrant expression of TUBB3 has also been found in various tumors of non-neural origin and can be used as a biomarker for cancer aggressiveness and a marker for the tendency to respond poorly to chemotherapy. This antibody is specific to TUBB3 but not cross-react with other tubulin isoforms. And the antibody is conjugated with CL594, Ex/Em 593 nm/614 nm.

## Notable Publications

Author	Pubmed ID	Journal	Application
Nao Iguchi	35332157	Sci Rep	IF
Yuki Shindo	35427599	Exp Cell Res	IHC

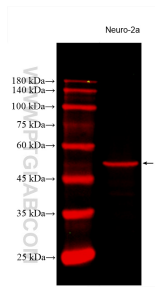
## Storage

**Storage:**  
Store at -20°C. Avoid exposure to light. Stable for one year after shipment.  
**Storage Buffer:**  
PBS with 50% Glycerol, 0.05% Proclin300, 0.5% BSA, pH 7.3.  
Aliquoting is unnecessary for -20°C storage

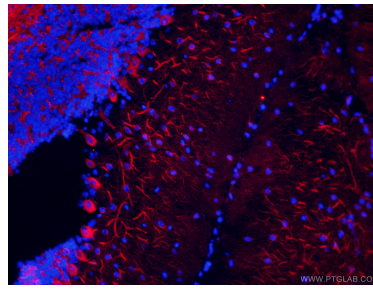
For technical support and original validation data for this product please contact:  
T: 4006900926 E: Proteintech-CN@ptglab.com W: ptgcn.com

This product is exclusively available under Proteintech Group brand and is not available to purchase from any other manufacturer.

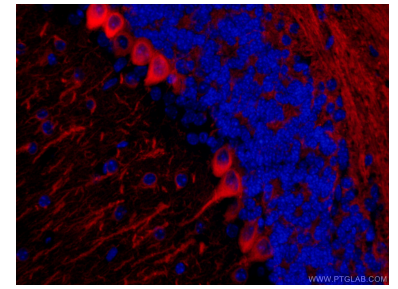
## Selected Validation Data



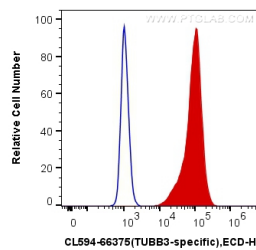
Neuro-2a lysates were subjected to SDS PAGE followed by western blot with CL594-66375 (TUBB3-specific antibody) at dilution of 1:3000 incubated at room temperature for 1.5 hours.



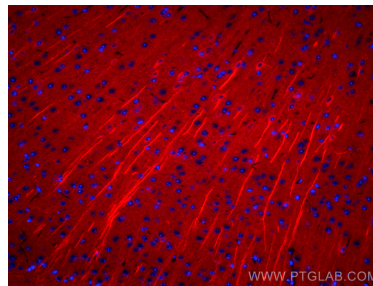
Immunofluorescent analysis of (4% PFA) fixed mouse brain tissue using CL594-66375 (TUBB3-specific antibody) at dilution of 1:50.



Immunofluorescent analysis of (4% PFA) fixed mouse brain tissue using CL594-66375 (TUBB3-specific antibody) at dilution of 1:50.



$1 \times 10^6$  SH-SY5Y cells were intracellularly stained with 0.4  $\mu$ g CoraLite®594 Anti-Human TUBB3-specific (CL594-66375, Clone:1F8G10) (red), or 0.4  $\mu$ g Mouse IgG1 Isotype Control (CL594-66360, Clone: T1F8D3F10) (blue). Cells were fixed with 4% PFA and permeabilized with Flow Cytometry Perm Buffer (PF00011-C).



Immunofluorescent analysis of (4% PFA) fixed mouse brain tissue using CoraLite®594 TUBB3-specific antibody (CL594-66375, Clone: 1F8G10) at dilution of 1:200.