

For Research Use Only

CoraLite®594-conjugated Plasminogen Monoclonal antibody



Catalog Number:CL594-66399

Basic Information

| | | |
|--|--|---|
| Catalog Number: CL594-66399 | GenBank Accession Number: BC060513 | Purification Method: Protein G purification |
| Size: 1000 µg/ml | GeneID (NCBI): 5340 | CloneNo.: 1F6A11 |
| Source: Mouse | UNIPROT ID: P00747 | Recommended Dilutions: IF-P 1:50-1:500 |
| Isotype: IgG1 | Full Name: plasminogen | Excitation/Emission maxima wavelengths: 588 nm / 604 nm |
| Immunogen Catalog Number: AG9938 | Calculated MW: 810 aa, 91 kDa | |
| | Observed MW: 105 kDa | |

Applications

| | |
|--------------------------------------|--|
| Tested Applications: IF-P | Positive Controls: IF-P : human liver cancer tissue, |
| Species Specificity: human | |

Background Information

Plasminogen is a secreted blood zymogen that is activated by proteolysis and converted to plasmin and angiostatin. Plasminogen plays an important role in fibrinolysis as well as wound healing, cell migration, tissue modeling and angiogenesis. Plasminogen is synthesized in the liver, and it circulates in the blood, with a half-life of 2.2 days. Plasminogen is the precursor of plasmin, which lyses fibrin clots to fibrin degradation products (FDP) and D-dimer; the conversion to active protease is mediated by tissue-type (tPA) and urokinase-type (uPA) plasminogen activators. Defects in plasminogen are likely a cause of thrombophilia and ligneous conjunctivitis.

Storage

Storage:
Store at -20°C. Avoid exposure to light.
Storage Buffer:
PBS with 50% Glycerol, 0.05% Proclin300, 0.5% BSA, pH 7.3.
Aliquoting is unnecessary for -20°C storage

For technical support and original validation data for this product please contact:

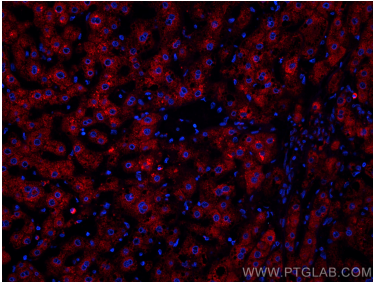
T: 4006900926

E: Proteintech-CN@ptglab.com

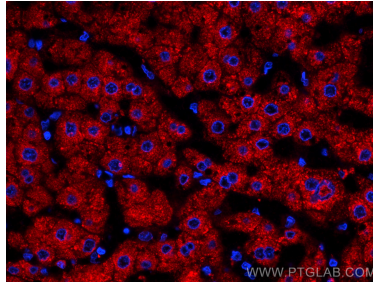
W: ptgcn.com

This product is exclusively available under Proteintech Group brand and is not available to purchase from any other manufacturer.

Selected Validation Data



Immunofluorescent analysis of (4% PFA) fixed human liver cancer tissue using CoraLite®594 Plasminogen antibody (CL594-66399, Clone: 1F6A11) at dilution of 1:200.



Immunofluorescent analysis of (4% PFA) fixed human liver cancer tissue using CoraLite®594 Plasminogen antibody (CL594-66399, Clone: 1F6A11) at dilution of 1:200.