

For Research Use Only

# CoraLite®594-conjugated human IgM Monoclonal antibody

Catalog Number: CL594-66484



## Basic Information

Catalog Number:

CL594-66484

Concentration:

1000 ug/ml

Source:

Mouse

Isotype:

IgG1

Immunogen Catalog Number:

AG1459

GenBank Accession Number:

BC009851

GeneID (NCBI):

3507

Full Name:

immunoglobulin heavy constant mu

Calculated MW:

69 kDa

Observed MW:

75 kDa

Purification Method:

Protein G purification

CloneNo.:

2D10B10

Recommended Dilutions:

IF-P: 1:50-1:500

Excitation/Emission maxima

wavelengths:

588 nm / 604 nm

## Applications

Tested Applications:

IF-P

Species Specificity:

human

Positive Controls:

IF-P: human appendicitis tissue, human tonsillitis tissue

## Background Information

### Storage

Storage:

Store at -20°C. Avoid exposure to light. Stable for one year after shipment.

Storage Buffer:

PBS with 50% glycerol, 0.05% Proclin300, 0.5% BSA, pH7.3

Aliquoting is unnecessary for -20°C storage

For technical support and original validation data for this product please contact:

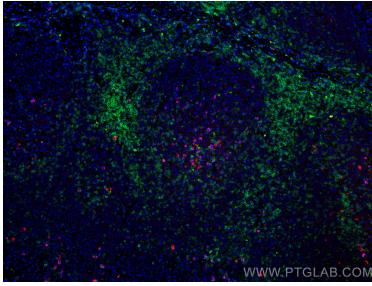
T: 4006900926

E: [Proteintech-CN@ptglab.com](mailto:Proteintech-CN@ptglab.com)

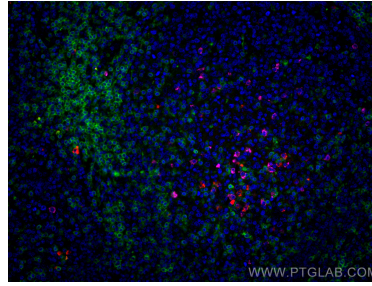
W: [ptgcn.com](http://ptgcn.com)

**This product is exclusively available under Proteintech Group brand and is not available to purchase from any other manufacturer.**

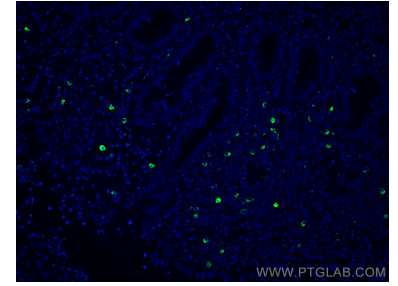
## Selected Validation Data



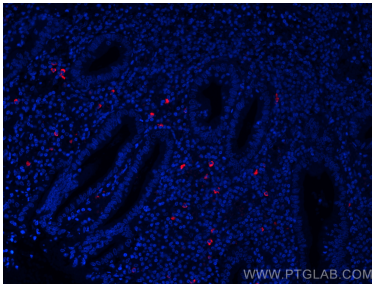
Immunofluorescent analysis of (4% PFA) fixed human tonsillitis tissue using CoraLite®594 human IgM antibody (CL594-66484, Clone: 2D10B10 ) at dilution of 1:100, CoraLite® Plus 488 CD3 antibody (CL488-60181, Clone: 3F3A1, green), CoraLite® Plus 647 human IgD antibody (CL647-16489, Magenta).



Immunofluorescent analysis of (4% PFA) fixed human tonsillitis tissue using CoraLite®594 human IgM antibody (CL594-66484, Clone: 2D10B10 ) at dilution of 1:100, CoraLite® Plus 488 CD3 antibody (CL488-60181, Clone: 3F3A1, green), CoraLite® Plus 647 human IgD antibody (CL647-16489, Magenta).



Immunofluorescent analysis of (4% PFA) fixed human appendicitis tissue using CoraLite®594 human IgM antibody (CL594-66484, Clone: 2D10B10 ) at dilution of 1:200.



Immunofluorescent analysis of (4% PFA) fixed human appendicitis tissue using CoraLite®594 human IgM antibody (CL594-66484, Clone: 2D10B10 ) at dilution of 1:200.