

For Research Use Only

# CoraLite®594-conjugated STK11/LKB1 Monoclonal antibody



Catalog Number:CL594-66719

## Basic Information

Catalog Number:

CL594-66719

Size:

1000 µg/ml

Source:

Mouse

Isotype:

IgG1

Immunogen Catalog Number:

AG13436

GenBank Accession Number:

BC007981

GeneID (NCBI):

6794

UNIPROT ID:

Q15831

Full Name:

serine/threonine kinase 11

Calculated MW:

49 kDa

Observed MW:

45-49 kDa

Purification Method:

Protein G purification

CloneNo.:

1H8E4

Recommended Dilutions:

WB 1:500-1:1000

Excitation/Emission maxima

wavelengths:

588 nm / 604 nm

## Applications

Tested Applications:

WB

Species Specificity:

Human, Mouse, Rat

Positive Controls:

WB : HeLa cells, HEK-293 cells, Jurkat cells

## Background Information

STK11(serine/threonine-protein kinase 11) is also named as LKB1, PJS, and belongs to the protein kinase superfamily. It controls the activity of AMP-activated protein kinase (AMPK) family members, thereby playing a role in various processes such as cell metabolism, cell polarity, apoptosis and DNA damage response. The tumour suppressor protein LKB1 is a serine/threonine kinase that has been causally linked to Peutz-Jeghers syndrome (PJS). Defects in STK11 are a cause of Peutz-Jeghers syndrome (PJS) and defects in STK11 have been associated with testicular germ cell tumor (TGCT) and some sporadic cancers, especially lung cancers. STK11 has 2 isoforms with MW of 49 kDa and 45 kDa, and can be detected as 50-54 kDa after posttranslational modification.

## Storage

Storage:

Store at -20°C. Avoid exposure to light. Stable for one year after shipment.

Storage Buffer:

PBS with 50% Glycerol, 0.05% Proclin300, 0.5% BSA, pH 7.3.

Aliquoting is unnecessary for -20°C storage

For technical support and original validation data for this product please contact:

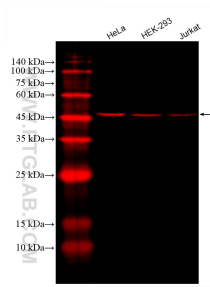
T: 4006900926

E: [Proteintech-CN@ptglab.com](mailto:Proteintech-CN@ptglab.com)

W: [ptgcn.com](http://ptgcn.com)

**This product is exclusively available under Proteintech Group brand and is not available to purchase from any other manufacturer.**

## Selected Validation Data



Various lysates were subjected to SDS PAGE followed by western blot with CL594-66719 (STK11/LKB1 antibody) at dilution of 1:500 incubated at room temperature for 1.5 hours.