

CoraLite®594-conjugated RHOA Monoclonal antibody

Catalog Number: **CL594-66733**

Basic Information

| | | |
|--|--|--|
| Catalog Number: CL594-66733 | GenBank Accession Number: BC005976 | Purification Method: Protein G purification |
| Size: 1000 µg/ml | GeneID (NCBI): 387 | CloneNo.: 1B3D7 |
| Source: Mouse | UNIPROT ID: P61586 | Recommended Dilutions: IF 1:50-1:500 |
| Isotype: IgG1 | Full Name: ras homolog gene family, member A | Excitation/Emission maxima wavelengths: 588 nm / 604 nm |
| Immunogen Catalog Number: AG1141 | Calculated MW: 22 kDa | |
| | Observed MW: 22 kDa | |

Applications

| | |
|---------------------------------------|---|
| Tested Applications: IF/ICC | Positive Controls: IF : HeLa cells, |
| Species Specificity: Human | |

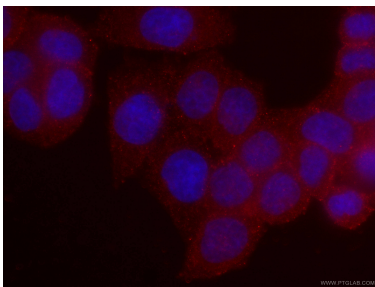
Background Information

RhoA is a member of the Rho family of small GTPases, which cycle between inactive GDP-bound and active GTP-bound states and function as molecular switches in signal transduction cascades. Rho proteins promote reorganization of the actin cytoskeleton and regulate cell shape, attachment, and motility. Overexpression of RhoA is associated with tumor cell proliferation and metastasis. RhoA signalling is critical to many cellular processes including migration, mechanotransduction, and is often disrupted in carcinogenesis.

Storage

Storage:
Store at -20°C. Avoid exposure to light. Stable for one year after shipment.
Storage Buffer:
PBS with 50% Glycerol, 0.05% Proclin300, 0.5% BSA, pH 7.3.
Aliquoting is unnecessary for -20°C storage

Selected Validation Data



Immunofluorescent analysis of (4% PFA) fixed HeLa cells using CL594-66733 (RHOA antibody) at dilution of 1:100.