

CoraLite®594-conjugated TOM20 Monoclonal antibody

Catalog Number: CL594-66777

1 Publications

Basic Information

Catalog Number:

CL594-66777

Size:

1000 µg/ml

Source:

Mouse

Isotype:

IgG2b

Immunogen Catalog Number:

AG2378

GenBank Accession Number:

BC000882

GeneID (NCBI):

9804

UNIPROT ID:

Q15388

Full Name:

translocase of outer mitochondrial membrane 20 homolog (yeast)

Calculated MW:

145 aa, 16 kDa

Observed MW:

16 kDa

Purification Method:

Protein A purification

CloneNo.:

1D6F5

Recommended Dilutions:

IF 1:50-1:500

Excitation/Emission maxima wavelengths:

588 nm / 604 nm

Applications

Tested Applications:

FC (Intra), IF/ICC

Cited Applications:

IF

Species Specificity:

Human

Cited Species:

human

Positive Controls:

IF : HepG2 cells,

Background Information

TOM20, also named as KIAA0016, belongs to the Tom20 family. It is a central component of the receptor complex responsible for the recognition and translocation of cytosolically synthesized mitochondrial preproteins. Together with TOM22, TOM20 functions as the transit peptide receptor at the surface of the mitochondrion outer membrane and facilitates the movement of preproteins into the TOM40 translocation pore. TOM20 is characterized as major docking receptors to mediate the recognition by different mechanisms.

Notable Publications

Author	Pubmed ID	Journal	Application
Zhengyu Hu	37409821	Adv Sci (Weinh)	IF

Storage

Storage:

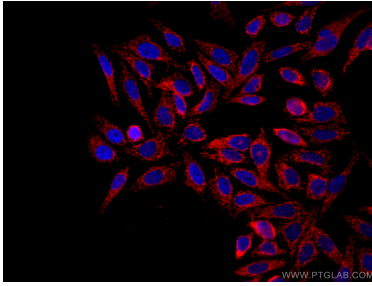
Store at -20°C. Avoid exposure to light. Stable for one year after shipment.

Storage Buffer:

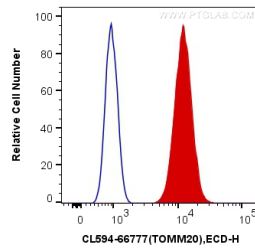
PBS with 50% Glycerol, 0.05% Proclin300, 0.5% BSA, pH 7.3.

Aliquoting is unnecessary for -20°C storage

Selected Validation Data



Immunofluorescent analysis of (4% PFA) fixed HepG2 cells using CoraLite@594 TOM20 antibody (CL594-66777, Clone: 1D6F5) at dilution of 1:200.



1X10⁶ HeLa cells were intracellularly stained with 0.2 ug CoraLite@594 Anti-Human TOM20 (CL594-66777, Clone:1D6F5) (red), or 0.2 ug Mouse IgG2b Isotype Control (CL594-66360-3, Clone: K11B8C4B5) (blue). Cells were fixed with 4% PFA and permeabilized with Flow Cytometry Perm Buffer (PF00011-C).