

For Research Use Only

# CoraLite®594-conjugated MLX Monoclonal antibody



Catalog Number:CL594-67042

## Basic Information

Catalog Number:

CL594-67042

Size:

1000 µg/ml

Source:

Mouse

Isotype:

IgG1

Immunogen Catalog Number:

AG28729

GenBank Accession Number:

BC010689

GeneID (NCBI):

6945

UNIPROT ID:

Q9UH92

Full Name:

MAX-like protein X

Calculated MW:

298 aa, 33 kDa

Observed MW:

33 kDa

Purification Method:

Protein G purification

CloneNo.:

2A8D2

Recommended Dilutions:

IF/ICC 1:50-1:500

Excitation/Emission maxima  
wavelengths:

588 nm / 604 nm

## Applications

Tested Applications:

IF/ICC

Species Specificity:

Human

Positive Controls:

IF/ICC : HepG2 cells,

## Background Information

### Storage

Storage:

Store at -20°C. Avoid exposure to light. Stable for one year after shipment.

Storage Buffer:

PBS with 50% Glycerol, 0.05% Proclin300, 0.5% BSA, pH 7.3.

Aliquoting is unnecessary for -20°C storage

For technical support and original validation data for this product please contact:

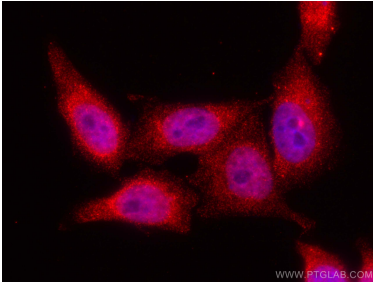
T: 4006900926

E: [Proteintech-CN@ptglab.com](mailto:Proteintech-CN@ptglab.com)

W: [ptgcn.com](http://ptgcn.com)

This product is exclusively available under Proteintech Group brand and is not available to purchase from any other manufacturer.

## Selected Validation Data



Immunofluorescent analysis of (4% PFA) fixed HepG2 cells using Coralite®594 MLX antibody (CL594-67042, Clone: 2A8D2 ) at dilution of 1:200.