

For Research Use Only

CoraLite®594-conjugated Alpha 2-Antiplasmin Monoclonal antibody



Catalog Number:CL594-67308

Basic Information

Catalog Number:

CL594-67308

Size:

1000 µg/ml

Source:

Mouse

Isotype:

IgG1

Immunogen Catalog Number:

AG4095

GenBank Accession Number:

BC031592

GeneID (NCBI):

5345

UNIPROT ID:

P08697

Full Name:

serpin peptidase inhibitor, clade F (alpha-2 antiplasmin, pigment epithelium derived factor), member 2

Calculated MW:

491 aa, 55 kDa

Purification Method:

Protein G purification

CloneNo.:

3F6C3

Recommended Dilutions:

IF 1:50-1:500

Excitation/Emission maxima

wavelengths:

588 nm / 604 nm

Applications

Tested Applications:

IF/ICC

Species Specificity:

Human

Positive Controls:

IF : HepG2 cells,

Background Information

Storage

Storage:

Store at -20°C. Avoid exposure to light.

Storage Buffer:

PBS with 50% Glycerol, 0.05% Proclin300, 0.5% BSA, pH 7.3.

Aliquoting is unnecessary for -20°C storage

For technical support and original validation data for this product please contact:

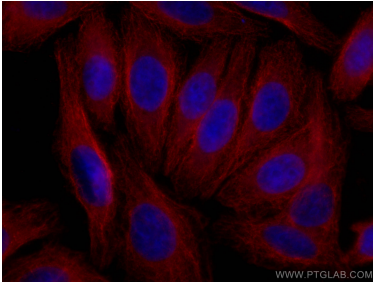
T: 4006900926

E: Proteintech-CN@ptglab.com

W: ptgcn.com

This product is exclusively available under Proteintech Group brand and is not available to purchase from any other manufacturer.

Selected Validation Data



Immunofluorescent analysis of (-20°C Ethanol) fixed HepG2 cells using CoraLite®594-conjugated Alpha 2-Antiplasmin antibody (CL594-67308, Clone: 3F6C3) at dilution of 1:100.