

# CoraLite®594-conjugated ALDOA Monoclonal antibody

Catalog Number: **CL594-67453**

## Basic Information

Catalog Number: <b>CL594-67453</b>	GenBank Accession Number: <b>BC016800</b>	Purification Method: <b>Protein G purification</b>
Size: <b>1000 µg/ml</b>	GeneID (NCBI): <b>226</b>	CloneNo.: <b>1D6C2</b>
Source: <b>Mouse</b>	UNIPROT ID: <b>P04075</b>	Recommended Dilutions: <b>IF 1:50-1:500</b>
Isotype: <b>IgG1</b>	Full Name: <b>aldolase A, fructose-bisphosphate</b>	Excitation/Emission maxima wavelengths: <b>588 nm / 604 nm</b>
Immunogen Catalog Number: <b>AG17952</b>	Calculated MW: <b>39 kDa</b>	
	Observed MW: <b>39 kDa</b>	

## Applications

Tested Applications: <b>IF/ICC</b>	Positive Controls: <b>IF : HeLa cells,</b>
Species Specificity: <b>Human, Mouse, Rat</b>	

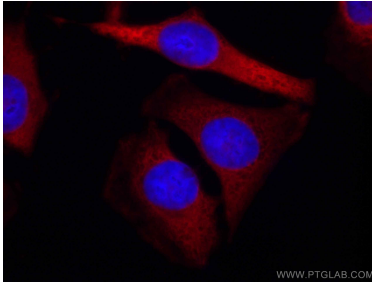
## Background Information

ALDOA (Fructose-bisphosphate aldolase A) is also named as lung cancer antigen NY-LU-1, muscle-type aldolase, ALDA and belongs to the class I fructose-bisphosphate aldolase family. The ALDOA gene encodes a homotetrameric protein (PMID:14615364). It is found in skeletal muscle and red blood cells, and functions in glycolysis, promoting the reversible cleavage of FBP to triose phosphate, G-3-P and DHAP. ALDOA is upregulated in various cancers, including human lung squamous and renal cell carcinomas (PMID:19937139).

## Storage

**Storage:**  
Store at -20°C. Avoid exposure to light.  
**Storage Buffer:**  
PBS with 50% Glycerol, 0.05% Proclin300, 0.5% BSA, pH 7.3.  
**Aliquoting is unnecessary for -20°C storage**

## Selected Validation Data



Immunofluorescent analysis of (-20°C Ethanol) fixed HeLa cells using CoraLite®594 ALDOA antibody (CL594-67453, Clone: 1D6C2 ) at dilution of 1:200.